



Rural Regeneration Strategy & Rural Housing Strategy

17th March 2011

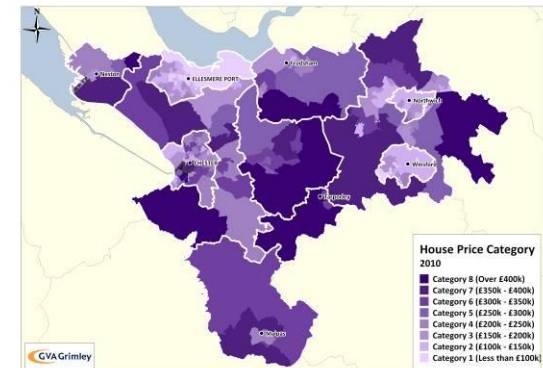
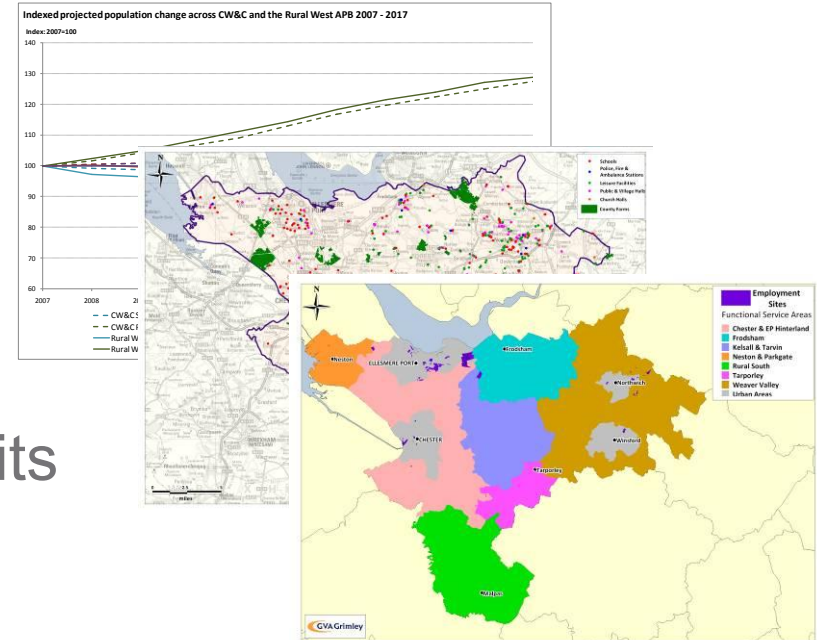
- CW&CC need for a coherent strategies to ensure sustainable vibrant communities
- Integrated approach to regeneration & housing strategies across the whole of Cheshire West & Chester

Rural Area

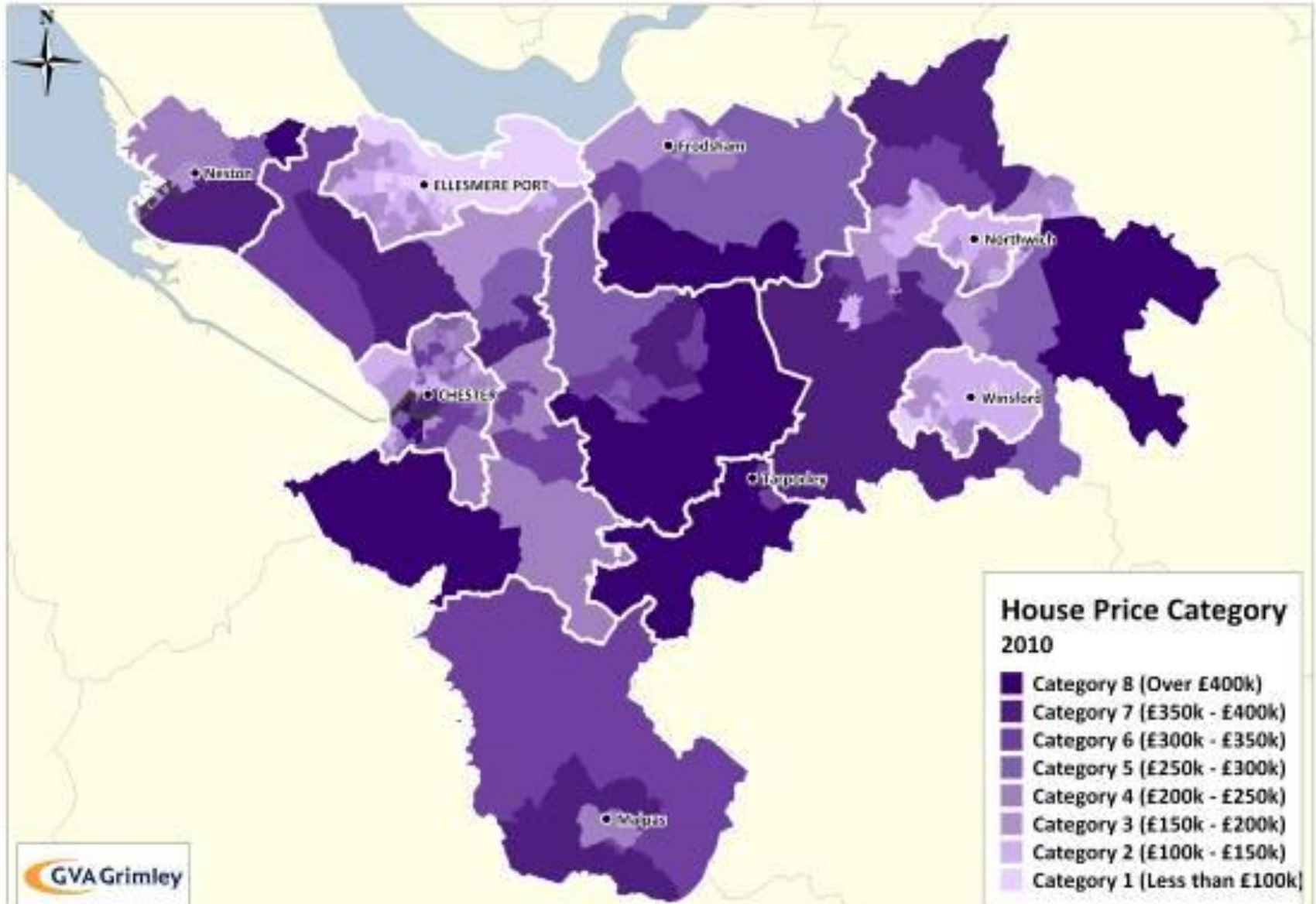


Key issues from evidence & consultation

- Demographic challenge
- Housing challenge
- Local access to services
- Living within environmental limits
- Local economic opportunities
- Fragmented rural voice
- Contributing to growth



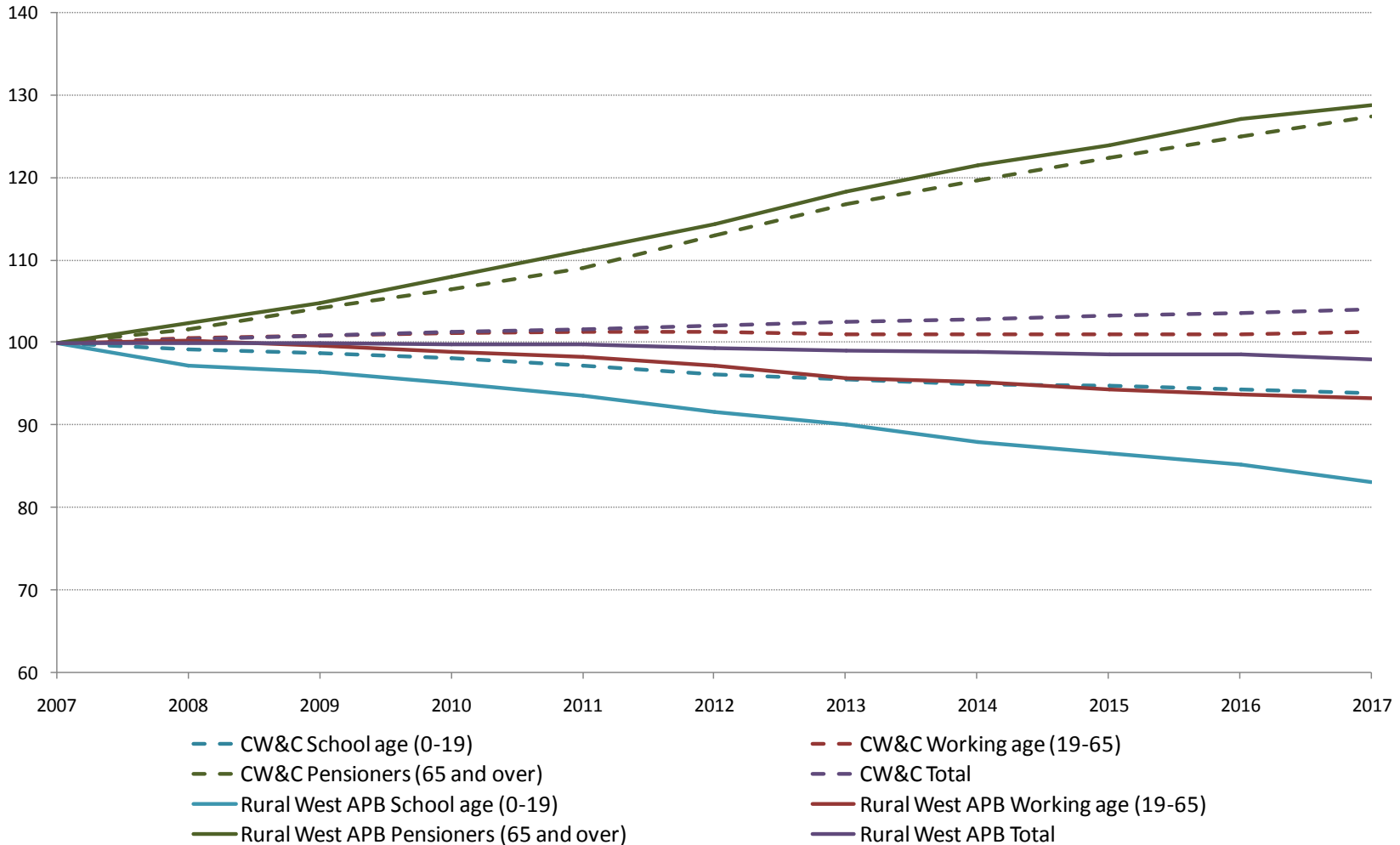
Key issues from evidence & consultation



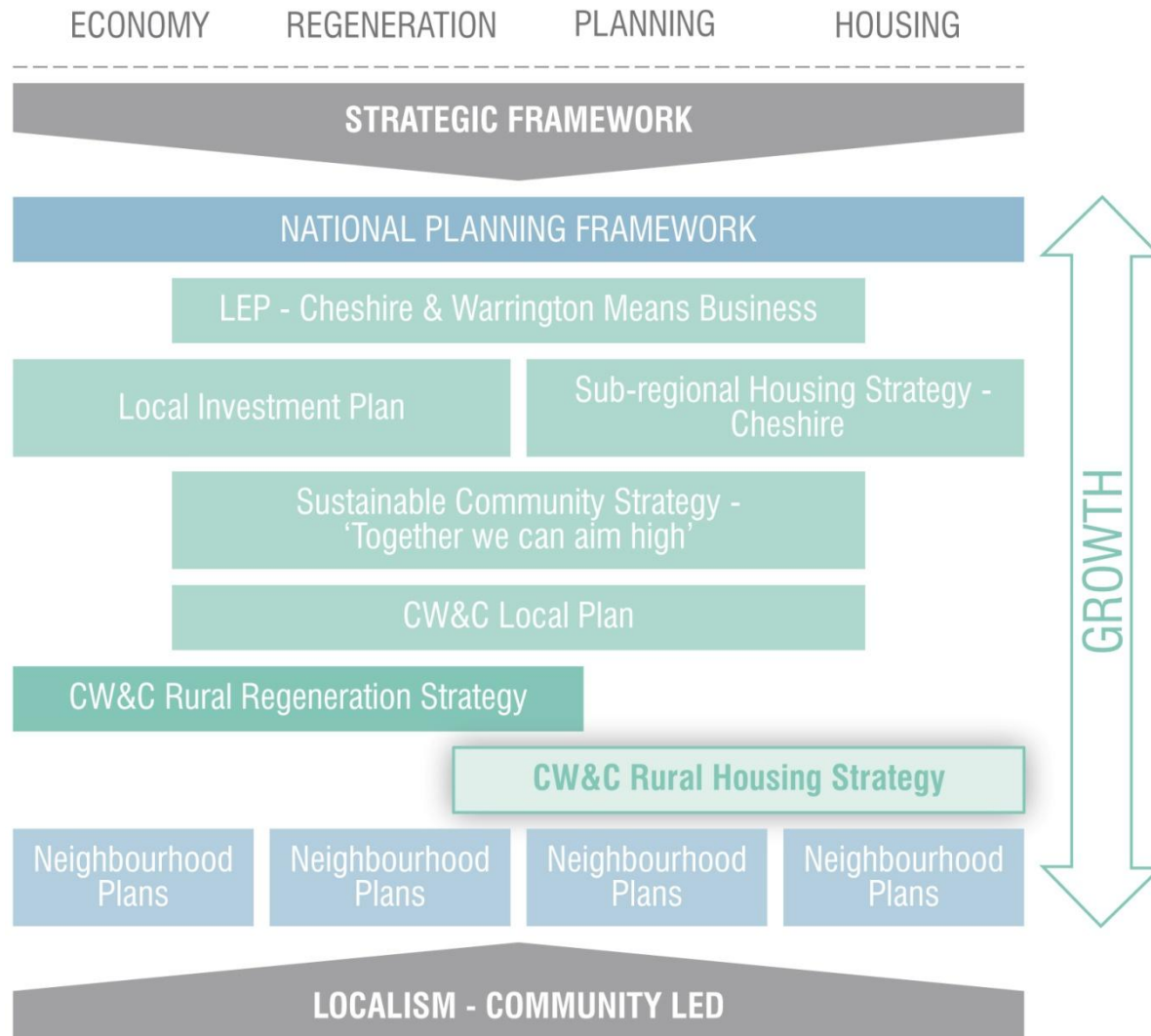
Key issues from evidence & consultation

Indexed projected population change across CW&C and the Rural West APB 2007 - 2017

Index: 2007=100



Role of the Two Strategies



Re-vitalising Communities requires..

- 17000 people below pensionable age (5% increase on total population)
- 8000 houses (15% increase)
- 3600 jobs (7% increase)

Unleashing the Potential requires..

- between 2000 and 4000 additional households



Contributing to CW&CC aspirations around sustainable economic growth requires..

- access to land, development capacity & finance
- access to high quality education, skills and training
- targeted investment in high value businesses and clusters
- super fast broadband infrastructure and public transport

.....whilst ensuring that the natural and historic environment is protected for the benefit of future generations

Implementation

How to Achieve Objectives

IMPLEMENTATION FRAMEWORK

Implementation - Delivering the Rural Strategy Framework

Create a Viable Structure
for Rural Governance

Set a Positive
Planning Context

Secure Best Value from
Public Assets

A Commitment to New Ways of Working

Localism - working with and
through parishes and towns
(neighbourhoods)

Place Based Working - multi-
discipline teams from within
& beyond the Local Authority

Local Delivery Partnerships -
partnering with estates, RSL's
Business & Social Enterprises

The Council's Changing Delivery Roles

Interventions -
where market failure
affects economic &
quality of life outcomes

Enabling - meeting "half way" and
providing the conditions & professional
support for others to deliver positive
outcomes

Commissioning -
programmes & projects

To revitalise rural communities and contribute to Cheshire West & Chester's sustainable economic growth

Supply of land

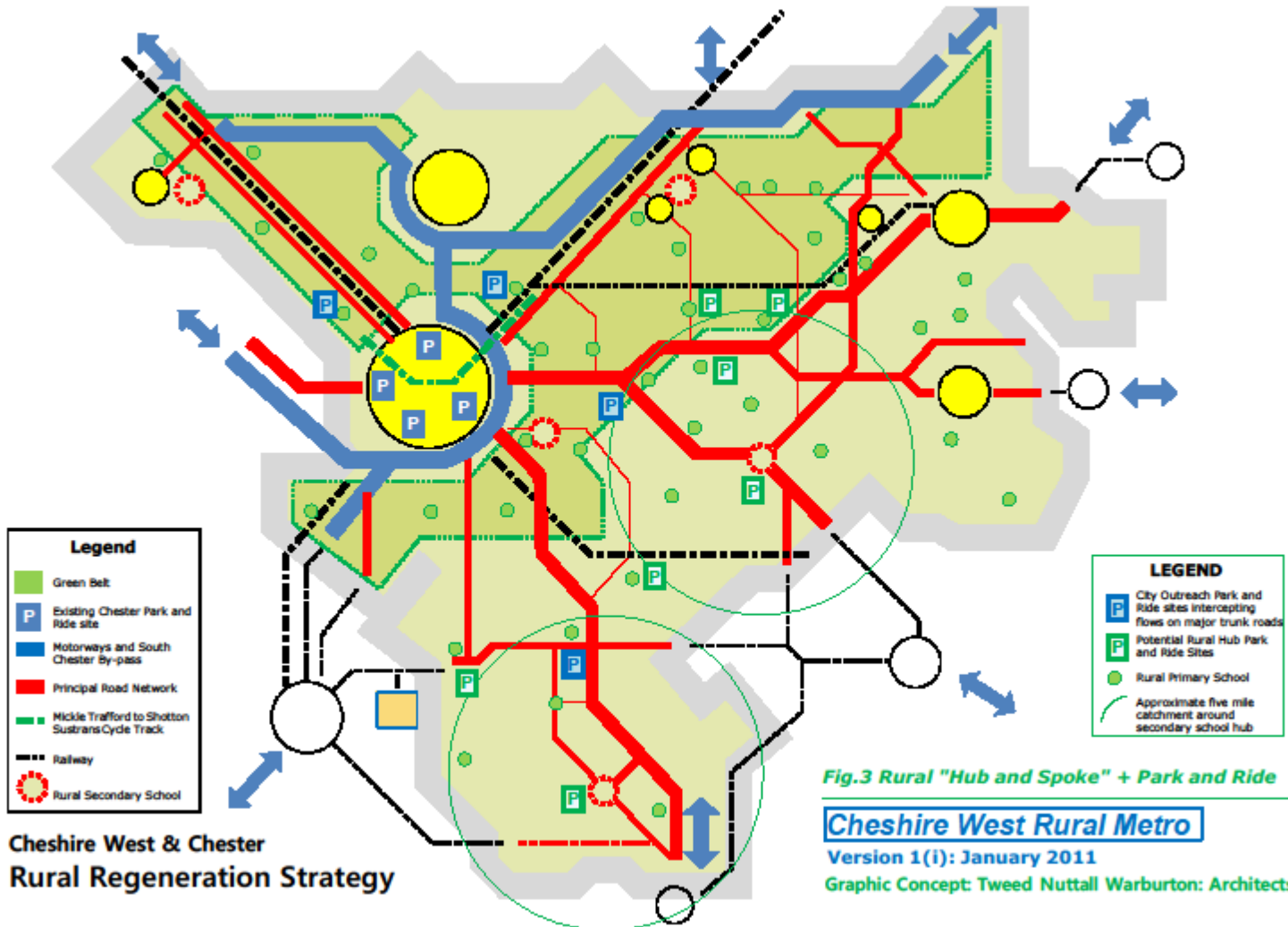
Strategic housing partnerships

Neighbourhood Planning

Super Fast Broadband

Renewable Energy

“Rural Metro” accessibility programme



Public Consultation

End date 20th June 2011

http://www.cheshirewestandchester.gov.uk/news_and_events/council_consultations/rural_regeneration_strategy.aspx

Contact

Chris Capes 01244 973164

Rural.support@cheshirewestandchester.gov.uk