

# Partnerships West

A regular update on partnership developments in West Cheshire



**WELCOME....**to this month's news and activity from the West Cheshire Together partnerships framework.

Our readers should be familiar with **Grozone** - the intergenerational community garden project in Northwich. This project has beaten off stiff competition to make it through to the finals of the **Big Lottery People's Millions funding competition** and will have the chance to compete for £48,000 funding!

Friends of Grozone have been hard at work this year turning a derelict piece of unused land into a community resource – designing the garden, consulting with residents, preparing the ground and starting to grow vegetables and fruit on site. Ten residents have been trained in how to garden organically, with five of them being awarded a national qualification. This funding would mean the continuation of Grozone, to work with even more schools, volunteers and special needs groups in the area. So much has been achieved so far and they are looking for your votes to continue to this good work.

Grozone will be appearing on Granada Reports on **Wednesday 24<sup>th</sup> November**, 6.00pm, and they really need all our votes!

Without the People's Millions funding the project could grind to a halt – just as it is blossoming. Grozone want to do so much more and engage with many more individuals and groups in the Northwich and Winsford areas. They want to create a Forest Schools area to teach children about the joys of being outdoors; expand the growing capacity through the installation of a greenhouse; train more people to grow fruit and veg; and work with local retired Age Concern volunteers "Men in Sheds" to create a board walk and bog garden on the wet part of the site, which will benefit wildlife.



On 24<sup>th</sup> November you will be able to cast your vote between 9.00am and midnight – with each phone line able to vote 10 times (cost is 15p from BT landlines). Watch Granada ITV Evening News to find out the number to call and the result will be down to the number of votes each project gets on the day. You can also visit:

<http://www.peoplesmillions.org.uk/2010-finalists/granada/grozone-community-garden> to register your support for the project and sign up to receive e-mail / mobile alerts.

For further information, contact Beth Brockett at Groundwork Cheshire on 01606 723171 or e-mail: [beth.brockett@groundwork.org.uk](mailto:beth.brockett@groundwork.org.uk) or visit: [www.groundworkaction.org.uk/grozone](http://www.groundworkaction.org.uk/grozone)

## INSIDE THIS ISSUE:

- ⇒ **Changing Times: Latest**
- ⇒ **Updates from individual Thematic Partnerships**
- ⇒ **Fostering and Benefits Advice news**
- ⇒ **"You Choose": On-line tool launched to 'have your say'**
- ⇒ **Area Partnership Board news**
- ⇒ **Road Safety Campaigns**
- ⇒ **Community Forums: Feedback and forthcoming dates**

With the magnitude and pace of the current changes in national policy, the forthcoming **LSP Network event** scheduled for 18<sup>th</sup> November at the Winsford Lifestyle Centre will provide an opportunity for partners to collectively consider some of these key changes impacting on our partnership activity.

\* \* \*

The Chancellor of the Exchequer, George Osborne, delivered the report of the **2010 Spending Review** to Parliament on 20<sup>th</sup> October. The report covers the four-year Spending Review (SR) period of 2011/12, 2012/13, 2013/14 and 2014/15 and can be viewed at:

[http://www.hm-treasury.gov.uk/spend\\_index.htm](http://www.hm-treasury.gov.uk/spend_index.htm)

The implications of the SR for all partners were discussed at the last West Cheshire Together Steering Group meeting on 28<sup>th</sup> October. Whilst the full impacts have yet to be understood, the key message was that for most partners the cuts were not as severe as feared. However, some partners reported dramatic cuts already and expressed concern that further cuts would impact on their ability to keep offices open and deliver services. Some partners will look at opportunities to refocus their activities, such as colleges looking at offering courses for which there may be new funding. A number of organisations were concerned about the overall impact of the cuts and the current economic climate on our communities. It was noted that, whilst NHS budgets had been retained, the accelerating costs of treatments combined with growing health issues within our communities paints a worryingly bleak picture.

\* \* \*

Partners may also know that the Government last month announced **significant changes to local authority performance arrangements** with the abolition of Local Area Agreements and the National Indicator Set with immediate effect. The National Indicator Set is to be replaced by a single comprehensive set of all the data which local government is expected to provide central government. Current intelligence suggests that we will not know what these requirements are until February 2011, and that the data requirements will be less onerous than we have had previously, reducing the burden of central performance and providing scope to introduce locally determined and relevant performance management frameworks.

\* \* \*

We are delighted to announce that the recent submission to Government of a prospectus "*Cheshire and Warrington Means Business*" to establish a **Local Enterprise Partnership (LEP)** covering the sub-region of Cheshire (East and West) and Warrington was one of 24 successful bids (out of 67 submitted). The intention is that LEPs will help transform the economic geography of the country by creating a new local dynamism that will encourage economic growth and protect businesses with proper accountability. The next stage will be the establishment of a LEP board.

\* \* \*

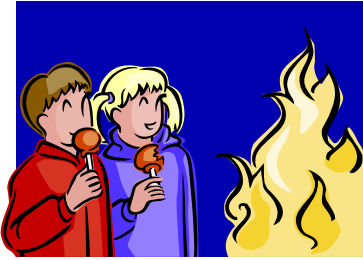
In August, Cheshire West and Chester Council had submitted a bid to Government to take part in a pilot scheme to deliver a "**Local Integrated Services**" (LIS) approach to service delivery which would enhance the role of locality working and give communities greater opportunity to control and shape how services are provided. The LIS proposals recently received support from the Cabinet Office and will initially focus on the Ellesmere Port area, with plans to roll out across West Cheshire over the next three years. The starting point will be the current APB areas where, following work with local communities to identify priorities, partners will begin discussions on pooling resources into Community (place based) budgets, with services commissioned through APBs.

\* \* \*

All of the above key items were discussed at the **LSP Steering Group** on 28<sup>th</sup> October and a briefing note and minutes of the meeting can be viewed on the West Cheshire Together website at:

[http://www.westcheshiretogether.org.uk/lsp/lsp\\_events/lsp\\_28th\\_october\\_2010.aspx](http://www.westcheshiretogether.org.uk/lsp/lsp_events/lsp_28th_october_2010.aspx)

For further information on any of the above, contact Andrea Mageean, Partnership Adviser, on 01244 977561 or e-mail: [andrea.mageean@cheshirewestandchester.gov.uk](mailto:andrea.mageean@cheshirewestandchester.gov.uk)



Over the bonfire period, Safer and Stronger partners (including Cheshire Fire & Rescue Service, Cheshire Police and Cheshire West & Chester Council Streetscene and Community Safety Teams) delivered a joint initiative aimed at reducing the number of **illegally set fires**. Leaflets were given out in “hotspot” locations promoting a hotline number for the public to report any illegally built fires spotted. The Council’s Streetscene team then operated an out-of-hours response to remove the built fires before they were set alight.

An advertising campaign encouraged attendance at official bonfires and feedback from these organised events was very positive, in particular in Ellesmere Port where an official bonfire was held for the first time with the public queuing down the street to attend! Destiny & Elite nightclub also hosted an Under 18’s disco aimed at diverting young people into positive activities.

Although the Partnership is still collating figures, initial analysis shows that there were significantly fewer secondary fires this year than in previous years, endorsing the benefits of partnership working.

In October, five special area editions of the **Talking Together borough newspaper** were produced by the Safer and Stronger Communities Thematic Partnership to highlight its work around making West Cheshire a safer place to live. You can view the five area editions at the following link:-

[http://www.westcheshiretogether.org.uk/strategic\\_themes/safer\\_stronger\\_communities.aspx](http://www.westcheshiretogether.org.uk/strategic_themes/safer_stronger_communities.aspx)

In other news, **tackling alcohol** is a priority for the Thematic Partnership and, in the Safer Stronger Strategic Assessment, Chester has been highlighted as a key area experiencing alcohol related crime and disorder. One way to tackle this is to designate an area an **Alcohol Exclusion Zone** (known also as a Designated Public Place Order [DPPO]). The DPPO makes it an offence to drink alcohol after being required by a uniformed officer not to do so. To designate an area an Exclusion Zone, the Council must be satisfied that nuisance, annoyance or disorder has been associated with public drinking in that area, or is likely to be through displacement if a nearby area was designated.

There are a number of areas within the former Chester city footprint that are already designated areas, however when viewed on a map they look nonsensical e.g. one side of Nuns Road by Chester Racecourse being designated and the other side not. This patchwork quilt effect causes confusion and makes enforcement difficult, therefore the proposal at this stage is for the Council to “informally” consult with Chester residents to identify whether they would like a blanket DPPO across the Chester APB area. These informal consultations include talking to local people about their preferred options and, if the majority are in favour of a blanket ban, a formal consultation will then take place.

For further information, contact Jane Makin, Safer Stronger Partnerships Team Leader, on 01244 973464 or e-mail: [jane.makin@cheshirewestandchester.gov.uk](mailto:jane.makin@cheshirewestandchester.gov.uk)

\* \* \*

**White Ribbon Day: 25<sup>th</sup> November** - The white ribbon is the symbol for “International Day for the Eradication of Violence against Women” and publicising this day is an integral part of Cheshire West and Chester Domestic Abuse Partnership’s Strategy, linking to the Safer Stronger Thematic Partnership priorities to address domestic abuse, reduce re-offending, tackle anti-social behaviour and reduce alcohol related crime.

The White Ribbon Campaign is the largest effort in the world of men working to end men's violence against women. It relies on volunteer support and financial contributions from individuals and organizations. Wearing a white ribbon is a personal pledge never to commit, condone or remain silent about violence against women. Each year, the campaign urges men and boys to wear a ribbon for one or two weeks, starting on 25<sup>th</sup> November, the date of White Ribbon Day. Visit the website at: [www.whiteribboncampaign.org.uk](http://www.whiteribboncampaign.org.uk)

For further information, contact Sheila Brookes on 01244 972915 or e-mail: [sheila.brookes@cheshirewestandchester.gov.uk](mailto:sheila.brookes@cheshirewestandchester.gov.uk)

In October, five Merseyside men were arrested and almost 10 million **illicit cigarettes** seized by officers from HM Revenue and Customs (HMRC). The huge haul of smuggled cigarettes, with a duty value of over £1.8m, were delivered to premises in Ellesmere Port after being illegally imported from Dubai, via Holland, into the UK. Illicit tobacco perpetuates health inequalities but also has other impacts. Buying cheap, smuggled cigarettes on a street corner, at a local pub or “under the counter” isn’t a bargain – it means trading with criminals. Cigarette smugglers cheat the country of revenue vital to funding essential public services like hospitals and schools. Smuggling also has a devastating impact on honest retailers forced to compete with the shadow economy in these hard times. The five men, all from the Wallasey area, were bailed pending further enquiries into this huge seizure. The cigarettes have been sent for recycling to generate electricity on the National Grid.



Anyone with information about illegal smuggling activities should call the Customs’ Hotline on 0800 59 5000 or alternatively call Crimestoppers on 0800 555 111.

\* \* \*

Building work has started on a £200,000 **new healthy living centre in Chester**. Plas Dinas in Blacon is now set to be transformed into a beacon of wellbeing for the local community and Chester residents as a whole following a major refurbishment by NHS Western Cheshire.

The ground floor will be home to the new Chester Healthy Living Centre which will be the hub of a network of activities and services promoting health throughout the city. The Healthy Living Centre, similar to the one in Ellesmere Port, will offer a variety of services ranging from cookery classes through to Indian head massage and other holistic therapies offered by ‘Well Blacon’. It is envisaged that the centre will also signpost local people to healthy living services and activities throughout the city such as exercise classes in community halls and the activities of organisations such as Lache Park Limited, Vintage Blacon and Age UK.

The centre, which will be opened by a guest celebrity and local leaders on 15<sup>th</sup> December, welcomes working with organisations and groups interested in using the rooms or anyone wanting to advertise their healthy living activities. It will also look to recruit volunteers to work in a variety of roles and is keen to be responsive to local needs now and in the future.

For more information go to <http://www.lhlc.co.uk/> or telephone 01244 650387 during office hours (Mon-Thurs) or e-mail: [wc-pct.ChesterHLC@nhs.net](mailto:wc-pct.ChesterHLC@nhs.net)

**How to influence positive change through the Planning System**  
**Tuesday 30<sup>th</sup> November, 6.00–8.00pm (light supper from 5.30pm)**  
**Blackburne Place, Liverpool, L8 7PE**

This free health and wellbeing planning workshop is aimed at community groups, community activists, volunteers and community support workers in Merseyside and the North West.

Getting involved and having a voice in deciding how a place looks and feels is important for our health and wellbeing. Changes to the planning system now provide greater opportunities for people to get involved at an earlier stage in deciding how where they live is shaped.

This workshop hopes to provide a learning opportunity about the links between health and land-use planning and how the community can get more involved in land-use planning processes.

To find out more or to book a place please call Jackie Dibley, Community Planner for NW Planning Aid on 01254 820 996 or e-mail: [nwcp@planningaid.rtpi.org.uk](mailto:nwcp@planningaid.rtpi.org.uk)

## You can Foster

Cheshire West and Chester Council and 22 other councils in the Northwest have come together for a campaign to recruit more people to become foster carers.



The “You can Foster” campaign was launched on 28<sup>th</sup> October and shows the diverse range of people who foster. It hopes to attract over 150+ new carers across the region to foster for their local authority. For more information, telephone 0800 634 7052 or visit: <http://youcanfoster.org/>

## Benefits Advice Stand: Free Advice

A team of Welfare Benefit advisers have set up in Chester Market (from 4<sup>th</sup> November) offering benefit advice to local people. They will be available every Thursday morning between 9.30am and 12 noon to help and give advice about any of the following:-

- Housing and Council Tax Benefit
- Maternity Grants
- Pension Credit
- Tax Credits
- Child care costs
- Managing debt, mortgage or rent arrears
- Free school meals
- Free nursery places
- Help with costs of NHS prescriptions, dental treatment, eyesight tests etc; and
- Advice about Training and employment opportunities in the local area

Advisers can help residents complete forms, advise customers on what help is available or arrange home visits or customer telephone call backs for any customer who prefers to discuss matters privately. If you wish to speak to a Benefit adviser, please ring 0300 123 7021 (local call rate).

## You Choose: Residents invited to “have their say” on future of services

Cheshire West and Chester Council recently launched a new on-line tool to allow residents to have their say on the future of their services. Known as “You Choose”, the tool invites local people to indicate the amount of money they would like to see spent on their local services and to understand the consequence of their decisions. This information will be used when Councillors set the Council’s budget in February.



The Council is always looking for new and innovative ways to engage with local residents and is keen to encourage people to play their part and have their say.

“You Choose” is available for free to all local authorities and forms part of the Council’s wider approach to consulting on its budget proposals. It follows a significant consultation on its ten year capital vision and, in December, a document outlining the Council’s budget proposals will also be made available to residents to have their say. Further meetings with residents and community groups will also be planned.

“You Choose” will be available until mid-January 2011 and can be accessed at: <http://www.cheshirewestandchester.gov.uk/shapeyourservices> The Council’s Library Service is also encouraging residents to access “You Choose” in local libraries, particularly if they don’t have access to a computer of their own.

## Local Transport Plan: Consultation reminder!

As mentioned in the October bulletin, views are currently being sought on the draft Local Transport Plan (LTP) document and identified priorities for the period 2011 to 2026. Your comments are important and will help to produce a new strategy that is effective and fit for purpose. The deadline for your comments is **31<sup>st</sup> December 2010**.

For more information about the LTP and to complete an on-line version of the questionnaire, please visit:-

[http://www.cheshirewestandchester.gov.uk/news\\_and\\_events/council\\_consultations/local\\_transport\\_consultation-1.aspx](http://www.cheshirewestandchester.gov.uk/news_and_events/council_consultations/local_transport_consultation-1.aspx)

If you would prefer to receive a paper copy of the questionnaire, please e-mail the LTP Team at: [ltip@cheshirewestandchester.gov.uk](mailto:ltip@cheshirewestandchester.gov.uk) or telephone 0300 123 7036.

## News from Rural West Area Team

**Nicky Waters**, one of the Council's five National Management Trainees, has joined the Rural West Area Team for six months and will be leading on a number of key areas including:-

**Research:** Nicky will be analysing and mapping key data relating to the demographic make up of Rural West at Lower Super Output area level including deprivation, Local Council boundaries and priorities identified in Parish Plans. This information will be used to inform gaps in services and opportunities to support Local Councils and community groups implement service improvements.

**Health and Wellbeing Grant:** Nicky will also oversee a new £20,000 "Five Ways to Empower Communities" grant provided by NHS Western Cheshire's Chairman's Initiative and the Rural West Area Team. This grant will offer Local Councils and community groups (where no Local Council exists) an opportunity to apply for a small grant of up to £2,000 to deliver interventions identified through Parish Plans or other local consultation. Nicky will be responsible for development of the grant process, managing the project appraisal steering group and monitoring outcomes of projects funded. If you would like to know more about Nicky's work please feel free to e-mail her on: [nicky.waters@cheshirewestandchester.gov.uk](mailto:nicky.waters@cheshirewestandchester.gov.uk)

\* \* \*



A **new shuttle bus service** to Hooton railway station is to be launched for residents living in Neston and surrounding areas as part of a four-week trial. The service has been developed in response to residents' concerns about limited public transport in the evenings to the station, a key transport link to Chester and Liverpool. The service will be available each **Thursday** and **Friday evening** from **25<sup>th</sup> November to 23<sup>rd</sup> December** and will be open to all (though children under 13 years of age must be registered and accompanied by an adult). The pre-booked evening minibus service will connect with the Chester trains at Hooton railway station and collect and return passengers from the Neston, Parkgate, Little Neston and Willaston area. The service will cost £1.00 each way, however elderly bus-pass holders and children under 8 years will not be charged.

The pilot initiative is being funded by the Council's Rural West Area Team and operated by Ellesmere Port and Neston Community Transport. To register and book your seats, or if you have any queries about the initiative, please telephone 0151 355 3739.

\* \* \*

A workshop is being held on **Thursday 25<sup>th</sup> November** at the Barbour Institute, Tattenhall (6.00 for 6.30pm) for Local Council representatives – this will focus on **best practice in managing Play Areas**. Anyone wishing to attend should contact Emma Stevens, Parish Support Officer, on 01244 972671 or e-mail: [emma.stevens@cheshirewestandchester.gov.uk](mailto:emma.stevens@cheshirewestandchester.gov.uk)

\* \* \*

The following web link to "**Pub is the hub**" promotes the use of pubs in supporting community needs and services in rural areas. Visit: <http://www.pubisthehub.org.uk/>

## News from Northwich & Rural North Area Partnership Board

In last month's edition, we reported that Voluntary Action Vale Royal (VAVR) received funding from Northwich & Rural North APB for a pilot intergenerational project which aims to bring together a group of Year 11s from Hartford High School and a group of local senior citizens to share their experiences of life and culture. They will work on developing IT skills, learn how to shop and bank on-line and discuss how local culture and the community have changed over the years. As well as a suggested list of topics, each age group will also be able to suggest their own. This will provide all learners with the opportunity to gain a recognised qualification and it is hoped this work will be disseminated through the LSP and Connexions as an exemplar of how to build bridges between generations. The project will run from January to Easter 2011.



VAVR's Adult Learning project already encourages adults to access IT based learning. Older learners (55+) have found this a useful way of engaging with their grandchildren, helping them with their homework, exploring methods of communication such as e-mail, Facebook and gathering information from the internet.

For further information, contact Arthur Neil at Voluntary Action Vale Royal on 01606 723182 or visit the website at: [www.vavaleroyal.org.uk](http://www.vavaleroyal.org.uk)

\* \* \*



The "Big Skate" neighbourhood event took place over the weekend of 30<sup>th</sup>/31<sup>st</sup> October at Rudheath Leisure Centre and attracted almost 250 skaters. This was very much a family event, with children and their parents having a go! Thanks go to Rudheath Community High School and Rudheath Leisure Centre for hosting the event as well as members of the Northwich and Rural North Area Partnership Board who helped with sponsorship.

## Forthcoming Events: Dates for your Diaries

### **Eid at the EPIC: Sunday 21<sup>st</sup> November (1.00-4.00pm) at Ellesmere Port Indoor Centre (EPIC)**

Celebrate the Muslim festival of Eid ul Adha – free family fun for everyone including food and drink, bouncy castle, henna face painting, nasheeds, Islamic art competition. Tel: 01244 343570 or 0151 356 6952.

### **Faith in the Big Society: Thursday 25<sup>th</sup> November (12.30–5.00pm) at Wyvern House, Winsford**

The aim of this free event is (i) to enable newly formed and established inter-faith groups to come together and share good practice; and (ii) to continue to raise the profile of the faith sector in Cheshire and the Cheshire Inter Faith Network. A buffet lunch will be provided. You can register to attend on-line at: <http://www.faithnw.org.uk/interfaith-week-in-cheshire.html> or contact Carlo Schroder on 01925 400139 or e-mail: [carlo.schroder@nwda.co.uk](mailto:carlo.schroder@nwda.co.uk)

### **Pakistani Flood Appeal Fundraising Dinner: Tuesday 30<sup>th</sup> November (7.00 for 7.30pm) at Chester Tandoori Restaurant**

A splendid evening of quality food is promised, developed by award-winning chefs. Tickets are £20 (three course meal – variety of options catered for) can be obtained by telephoning 01244 343570 or 347410.

### **VCFS Hub Conference: Friday 3<sup>rd</sup> December (10.00–3.30pm) at Crewe Alexandra Football Club**

Cheshire Children, Young People and Families' Voluntary, Community and Faith Sector Hub's annual conference "Celebrate, Reflect and Move Ahead!". Contact Pauline Ruth on 07967627554 or e-mail [ruth9x@tinyonline.co.uk](mailto:ruth9x@tinyonline.co.uk)

## Private Sector Housing Travelling Roadshows success!

The Council's Private Sector Housing Team has embarked on raising the profile of the section and what it can offer the community. Home owners, private sector landlords and tenants were invited to attend one of nine roadshows throughout the West Cheshire area during September to obtain advice and information on private housing issues.

Housing standards for rented properties, grants for emergency works and the Cheshire Landlord Accreditation Scheme were all highlighted at the roadshows which were held in local supermarkets or as part of a local Community Forum meeting. In addition, advice and support was available on an array of issues from home improvement loans to disabled facilities grants, energy efficiency grants and grants to bring empty properties back into use. The roadshows also gave residents an opportunity to raise general matters relating to the role of Cheshire West and Chester Council.

Following the success of the roadshows, it is hoped to repeat them in Spring 2011 with the aim of visiting other areas in West Cheshire not reached the first time round.

The Private Sector Housing Team also has a range of leaflets which outline their services and are available for the general public and partner organisations. Anyone interested in obtaining any leaflets can contact Stan Ellison, Housing Project Officer on 0151 356 6472 or e-mail: [stan.ellison@cheshirewestandchester.gov.uk](mailto:stan.ellison@cheshirewestandchester.gov.uk)

## Tackling Road Safety directly with drivers

**Driver Engagement Days** are a joint venture between Cheshire Fire & Rescue Service, Cheshire Police and the Council's Road Safety Officers. Police officers stop offending motorists for any of the following reasons:-

- None wearing of seatbelts (drivers and passengers, front and rear)
- Using a mobile phone
- Minor speeding offences (2/3 mph over the speed limit)

Fire & Rescue Service personnel will then engage and educate the offending motorists/passengers with regard to any of the above offences. An appropriate DVD with various film clips showing either misuse of seatbelts/mobile phones/speeding etc. is shown and the consequences explained. The following statistics are taken from a Driver Engagement Day held in Malpas in October where 46 cars were stopped and 48 people shown the DVD presentation. Of those stopped:-

- ⇒ 36 were for speeding offences
- ⇒ 10 were for not wearing seatbelts
- ⇒ one was for using a mobile phone
- ⇒ one passenger who watched the presentation along with the driver of the vehicle

The age profile of those stopped might suggest that Malpas has a problem with its more experienced road users not abiding by the speed limit:-

- 9 aged between 14-25 years (5 for speeding, 3 for seatbelt and one for mobile phone offences)
- 4 aged between 26-35 years (one for speeding and 3 for seatbelt offences)
- 9 aged between 36-45 years (7 for speeding and 2 for seatbelt offences)
- 6 aged between 46-55 years (4 for speeding and 2 for seatbelt offences)
- 7 aged between 56-65 years (all 7 for speeding offences)
- 13 aged 66 years or older (all but one was for speeding offences)

There will be another Driver Engagement Day in Malpas on Tuesday 23<sup>rd</sup> November (a school day) between 11.00am and 3.00pm which will provide further evidence as to how local residents drive along the main road going past the high school. For further information, contact Martin Dowle, Community & Road Safety Manager (Cheshire Fire & Rescue Service) by e-mail: [martin.dowle@cheshirefire.gov.uk](mailto:martin.dowle@cheshirefire.gov.uk)

## Christmas Drink/Drive campaign

The Cheshire Safer Roads Partnership (CSRP) has agreed, via the Young Road Users Group, to target 17-25 year old males for their Christmas drink/drive campaign this year which runs from 1<sup>st</sup> December – 3<sup>rd</sup> January.



This campaign has allowed for restricted budgets and means Cheshire Fire & Rescue Service joining forces with Cheshire Police and the local Road Safety Unit. The campaign will use the theme “*Good, Bad and Ugly*”:-

- The **Good** will show how staff and officers will be using a lighter touch offering advice and guidance to drinkers and retailers;
- The **Bad** will highlight what happens when the advice is not heeded; and
- The **Ugly** will show the consequences - not just to the drinker, but to others as well.

The intention is to have “*Good, Bad and Ugly*” posters distributed to pubs, bars and clubs across Cheshire, predominantly establishments signed up to Pubwatch. In addition, the Partnership has funded several thousand beer mats (to be given out with the posters) which will have the Police 0845 phone number on one side and the Crimestoppers anonymous hotline on the other. The message on the mats will essentially be “if you see/spot a drink driver, call us” giving the public a mechanism with which to report drink/driving. Bluetooth technology will also be used to spread the message in some of Cheshire’s nightclubs. Cheshire Fire & Rescue Service will also be delivering a large scale drink/drive event outside Chester Town Hall on 17<sup>th</sup> December which will include “Santa” supporting the campaign.

McDonalds have agreed to support the partnership with A3 posters and A5 stickers on all of their Drive Thru kiosk windows, foamex posters on lampposts and outdoor banners at the Drive Thru exits. This imagery will again target 17-25 year old males and will focus on “*if you drink and drive, you’re more likely to have a crash*”.

Ultimately, this year’s message will be “don’t drink and drive” and will be supported by Police enforcement and followed up with theatre in education (schools and colleges).

For further information, contact either Gurminder Marwaha, CSRP Communications Manager, or Martin Dowle, Community & Road Safety Manager (Cheshire Fire & Rescue Service) by e-mail: [Gurminder.marwaha@cheshire.pnn.police.uk](mailto:Gurminder.marwaha@cheshire.pnn.police.uk) or [martin.dowle@cheshirefire.gov.uk](mailto:martin.dowle@cheshirefire.gov.uk)

## CAMCC News

**Cheshire Asian and Minority Communities Council (CAMCC)** formally announced its name change last month – it was formerly known as the Chester Asian Council. CAMCC is an advice, information and referral service for the Asian community and the reason for the name change is to better reflect the communities and areas it serves.

CAMCC has also recently appointed a new Development Manager, **Nadia Ali**, for three years to continue to develop the work and activities of CAMCC. This includes the production of a newsletter which has recently had a facelift thanks to Nadia’s expertise and can be viewed on the following web link:-



[http://www.cheshirewestandchester.gov.uk/community/equality\\_and\\_diversity.aspx](http://www.cheshirewestandchester.gov.uk/community/equality_and_diversity.aspx)

....and then click on “*Useful sources of information*” followed by “*Groups supporting racial and ethnic minorities*”.

For further information, contact Nadia Ali on 01244 343570 or e-mail: [chesterasian@aol.com](mailto:chesterasian@aol.com)

**Northwich East, Shakerley and Marbury** – met on 20<sup>th</sup> October at Wincham Community Centre with a focus on Marbury ward issues. The main agenda items included an update from the Police and Fire Services; the Council's Leisure Review and Local Transport Plan consultation; and Stop Incinerator in Disguise (SID) – a local action group against the building of a waste plant in Northwich. For further information on this, visit <http://help-sid.blogware.com/blog>

**Date of next meeting:** Wednesday 5<sup>th</sup> January 2011, 6.00pm, Northwich Memorial Hall  
(Northwich East and Shakerley ward focus)

Thursday 13<sup>th</sup> January 2011, 7.00pm (meet ward Councillors and partners from 6.15pm) Barnton Memorial Hall  
(Marbury ward focus)

**Mickle Trafford** – met on 20<sup>th</sup> October at Shell UK (Stanlow Manufacturing Complex) and focused on the theme of Emergency Planning. Presentations were made by officers from both Cheshire West and Chester Council Emergency Planning Team (Chris Samuel and Suzanne Pritchard) and Shell UK's Fire and Security Manager (Stuart Warburton).



**Date of next meeting:** 16<sup>th</sup> February 2011, 6.30pm,  
Scout Hut, Fiddlers Lane, Saughall

**Neston, Parkgate, Ledsham and Willaston** – met on 4<sup>th</sup> November at Willaston British Legion Services Club in an informal “drop in” session. Age Concern, Welfare Benefits, Neston Children's Centre, community activities in Neston and the Credit Union were all represented and provided information. Local Ward Councillors were also on hand to discuss local issues raised by residents in attendance.

**Date of next meeting:** Friday 28<sup>th</sup> January 2011, 9.30am, Neston Town Hall

**Central, Westminster, Grange and Rossmore** – met on 8<sup>th</sup> November at Ellesmere Port Civic Hall and received a presentation from the Council's Senior Network Strategy Manager, Richard Nickson, on the local transport plan consultation. Representatives from the Our Place team, Community Safety Wardens, Highways & Transportation and Housing were also present to address any specific queries raised.

Discussions focused on road gritting, local residential parking zones, bus services, derelict buildings and queries around specific housing, public highways and paving problems. Much reassurance was given that the Council were prepared for another cold winter period and that grit stocks were already in store for when required.

**Date of next meeting:** Monday 7<sup>th</sup> March 2011, 6.00pm, Ellesmere Port Civic Hall

## West Cheshire Together Self Assessment 2010-11

A second self-assessment of West Cheshire Together has recently been completed which measures our progress against our first year as a newly formed partnership. It outlines our approach to improving the quality of life of all our residents and demonstrates how, across the partnership, we are addressing our areas for improvement. The document also enables us to celebrate excellent practice within our local area. The full report and a summary version can be viewed at: [http://www.westcheshiretogether.org.uk/lsp/lsp\\_events/lsp\\_28th\\_october\\_2010.aspx](http://www.westcheshiretogether.org.uk/lsp/lsp_events/lsp_28th_october_2010.aspx)

## Forthcoming Community Forums

As we go to print, the following Community Forums are scheduled to take place as follows:-

Groves, Whitby, Sutton and Manor	<i>Wednesday 17<sup>th</sup> November, 6.00 for 6.30pm, Whitby Heath Primary School, Whitby, Ellesmere Port</i>
Hoole, Upton and Newton	<i>Monday 22<sup>nd</sup> November, 7.00pm, Hoole CE Primary School, Hoole, Chester</i>
Boughton Heath, Vicars Cross & Overleigh	<i>Tuesday 23<sup>rd</sup> November, Pulford Village Hall, Pulford, Nr Chester</i>
City	<i>Monday 29<sup>th</sup> November, 6.00pm, The Forum Studios (lower basement of the former Gateway Theatre), Chester</i>
Northwich West & Abbey	<i>Thursday 2<sup>nd</sup> December, 7.00pm, Moss Farm Leisure Centre, Winnington, Northwich</i>
Blacon	<i>Tuesday 7<sup>th</sup> December, 5.30 for 6.00pm, Blacon High School (Community Wing), Blacon, Chester</i>
Winsford	<i>Wednesday 8<sup>th</sup> December (time and venue to be confirmed)</i>
Eddisbury	<i>Tuesday 14<sup>th</sup> December, 6.30 for 7.00pm, The Fourways Inn, Delamere</i>
Frodsham, Helsby & Weaver	<i>Thursday 6<sup>th</sup> January 2011 (time and venue to be confirmed)</i>
Broxton	<i>Thursday 27<sup>th</sup> January 2011, Farndon Primary School, Farndon, Nr Chester</i>

Check the website at: [http://www.westcheshiretogether.org.uk/community\\_forums.aspx](http://www.westcheshiretogether.org.uk/community_forums.aspx) in case it has been necessary to make any changes to the information given above.

### **FEEDBACK.....your views or news**

Your comments on this bulletin, or any partnership news you would like to share, are encouraged and should be forwarded to:-

Lyn Raynor, Partnerships Officer

E-mail: [lyn.raynor@cheshirewestandchester.gov.uk](mailto:lyn.raynor@cheshirewestandchester.gov.uk)

Contributions for the December edition (issue 23) should be sent to Lyn in time for the bulletin to be finalised for circulation on or around Monday 13<sup>th</sup> December.