

# Partnerships West

A regular update on partnership developments in West Cheshire



**WELCOME....**to this month's news and activity from the West Cheshire Together partnerships framework.

We are delighted to report some great news for residents of **Rudheath** and **Witton** (in the *Northwich and Rural North* area) who are set to benefit from a lottery cash grant of more than £1 million!

The Big Lottery Fund – known as BIG – has earmarked these two areas as part of the first 50 areas in England to benefit from its Big Local Trust programme, helping people make their communities better places to live in, now and in the future.



Cheshire West and Chester Council was approached for suggestions of areas to put forward and Rudheath and Witton were submitted as areas with a population between 3,000 and 10,000 people, relatively deprived and with a high level of need.

The Big Local Trust is a dedicated funding stream to help people in neighbourhoods just like Rudheath and Witton to identify local issues and to develop the skills and confidence necessary to change things for the better. The funding can be spent for a period of up to 10 years and it is hoped to use this funding to lever in other funds.

There is currently a process of identifying local organisations to become charitable trustees of the programme. As things develop, we will provide further updates on this exciting news in due course. For further information, visit the Big Lottery Fund website at:

[http://www.biglotteryfund.org.uk/prog\\_biglocaltrust](http://www.biglotteryfund.org.uk/prog_biglocaltrust)

## INSIDE THIS ISSUE:

- ⇒ *Council's 10 Year Capital Vision* launch event
- ⇒ *Frodsham Volunteer Fair*
- ⇒ *Faith Sector Audit findings*
- ⇒ *Funding reward for "Men In Sheds"!*
- ⇒ *Feedback from Thematic Partnerships*
- ⇒ *Community Forum round-up*

## **DORIC: Launch of the Phase 1 DORIC Observatory**

The DORIC (Data Observatory and Research and Intelligence Collaborative) Partnership brings together the Councils, Primary Care Trusts, Police and Fire & Rescue Services in the Cheshire, Halton and Warrington areas to make information about people and places easier to access.

June saw the launch of the Phase 1 Data Observatory website, bringing together online information sources that people find useful for a variety of purposes in employment, research, advocacy or education.



For example, users such as public sector managers, researchers, community groups, business and the public can now access authoritative information about local population and communities, crime, health, the economy and much more. Performance information for public service providers is also accessible through the observatory, as are the results of public opinion surveys about local services.

For more information and to see how DORIC can help you go to: <http://www.doriconline.org.uk> or contact Claire Irving on 01244 977567 or e-mail: [claire.irving@cheshirewestandchester.gov.uk](mailto:claire.irving@cheshirewestandchester.gov.uk)

## Council's 10 Year Capital Vision: Consultation launch event

During the summer and autumn, Cheshire West and Chester Council is consulting with partners and local people on what its priorities for capital investment should be over the next ten years. Looking this far forward is a bold and innovative approach, which goes beyond normal local planning timeframes. It will offer real benefits by providing a clear vision of where we want to be in ten years time and what we need to do to get there.

The Council estimates that it will be necessary to spend £500m over 10 years to deliver the capital vision. It will obviously not be possible to fund all of the required investment immediately, so a consultation exercise has been launched to help identify the priority areas to focus on first.

A launch event was held at the HQ building in Chester on 21<sup>st</sup> July, attended by around 100 partners from West Cheshire Together LSP, Local Councils and the wider partnerships network. A consultation document is now available on the Council's website and it has also been sent out to all households with the latest copy of the 'Talking Together' newspaper (see article below). This document sets out 18 potential areas for investment and asks people to identify which ones they feel are the most important. Over the next few months further discussions will be held with groups of stakeholders and focus groups drawn from the Council's Citizens' Panel.



Once the Government's spending review has taken place there will be a clearer picture of the level of resources available. Together with the results of the initial consultation on priorities, this will inform the production of more detailed and specific proposals. Further consultation on these will then take place and will be integrated with consultation on the Council's revenue budget.

Please participate in the consultation, further details of which can be found on the Council's website at:

[http://www.cheshirewestandchester.gov.uk/news\\_and\\_events/press\\_releases/2010\\_press\\_releases/media\\_releases\\_for\\_july\\_2010/west\\_cheshire\\_residents\\_to\\_hav.aspx](http://www.cheshirewestandchester.gov.uk/news_and_events/press_releases/2010_press_releases/media_releases_for_july_2010/west_cheshire_residents_to_hav.aspx)

## 'Talking Together' Third Edition hits the streets of West Cheshire

The summer edition (edition 3) of **Talking Together** – the partnership newspaper produced by the large public agencies in West Cheshire – has recently hit the streets with copies being delivered to every household in the West Cheshire area. This edition contained a special insert on the Council's 10 Year Capital Vision consultation and residents are encouraged to "have your say" – an invitation to shape West Cheshire. This, and previous editions, can be viewed online at: <http://www.westcheshiretogether.org.uk/news.aspx>



### **DATE FOR YOUR DIARIES!**

West Cheshire Together is committed to hosting two wider LSP Network events a year so that as many individuals, organisations and partnerships as possible can come together, network, share ideas and have their voice heard. The next LSP Network event will take place on the morning of **Thursday 18<sup>th</sup> November 2010** at the **Lifestyle Centre in Winsford**.

Further details will follow in due course but, in the meantime, you can book your place now by contacting Lyn Raynor on 01244 972370 or e-mail: [lyn.raynor@cheshirewestandchester.gov.uk](mailto:lyn.raynor@cheshirewestandchester.gov.uk)

## Changing Times: News from the Coalition Government

After taking a little time to settle in, the new coalition ministers have started to make their first speeches, essentially confirming the policy direction set out in the *Coalition Programme*.

The main thrust of the programme is aimed at **deficit reduction** and the Treasury has already announced details of over £6 billion worth of cuts to Local Authority funding on 4<sup>th</sup> May. The largest reductions were in areas receiving the most funding, which generally were the most deprived areas of the North West. A 50% reduction in the former Local Area Agreement (LAA) Reward Grant was included in this announcement. There is a specific treasury report available about the impact on the North West and press releases about Council Tax freeze proposals.

The biggest reductions in future spending will be considered by the Treasury in its **Comprehensive Spending Review** (CSR) which will be completed by 20<sup>th</sup> October. The majority of Departments will be asked to identify savings in excess of 25%.

Ministers are currently considering proposals for changes to the current arrangements for **LAAs** and **National Indicators**. There has been a shift away from performance management, including the negotiation of targets and CAA processes, towards self assessment and a more traditional audit process.

**Localism** and decentralisation initiatives reflect the drive towards the reversal of the 80:20 ratio of central government to local government's control of decision-making. This approach also reduces the need for a regional tier. Local authorities and business leaders have been asked for outline proposals to set up Local Enterprise Partnerships (LEPs) by 6<sup>th</sup> September (Cheshire and Warrington have recently submitted their bid through the Cheshire and Warrington Enterprise Commission [formerly the Economic Alliance]). LEPs are expected to replace Regional Development Agencies (RDAs) after a period of transition by April 2012.

The Coalition is looking to replace big government with **Big Society**. Connected to this, the Department for Communities, Media and Sport (DCMS) has launched a consultation (deadline 21<sup>st</sup> August) on changes to lottery funding. More will go to sports, arts and heritage rather than the Big Lottery, which in turn will only go to voluntary and community groups rather than local authorities.

And finally, Ministers have decided not to continue with the **Tell Us Survey** and the **Places Survey**. This has implications for some National Indicator targets. It seems sensible at this time to defer considering action on inoperable reward targets until the CSR decision on LAA reward is known in October.

*(The above has been adapted from the Northwest Improvement and Efficiency Partnership's (NWIEP) "Partnerships NOW" Newsletter July 2010 - the Government Office Blog).*

## Encouraging Volunteering

Following on from successful events held in Northwich and Ellesmere Port over the last year, Cheshire West and Chester Council and Voluntary Action Vale Royal will be holding another **Volunteer Fair** for anyone interested in becoming a volunteer. Details are:-

**Date:** Tuesday 14<sup>th</sup> September

**Time:** 3.30 – 6.00pm

**Venue:** Frodsham Community Centre, Fluin Lane, Frodsham

Any organisations interested in attending the event as a stall-holder to promote volunteer opportunities within your organisation can contact Fiona Dunning on 01606 353526 or e-mail: [fiona.dunning@cheshirewestandchester.gov.uk](mailto:fiona.dunning@cheshirewestandchester.gov.uk) Please note that priority will be given to organisations who work within Frodsham and the surrounding areas.

Link Up have just completed their 2010 Faith Sector Audit across West Cheshire. This Audit process has sought to capture community action by all Faith Groups across all Communities. Key findings include:

- ⇒ There are 254 Faith Communities and Groups across West Cheshire, of which 56% (144) responded to this Audit;
- ⇒ Residents identified 420 community initiatives serving 11,000+ users (nearly 6,000 weekly) mobilising 2,000+ volunteers and 47,000+ volunteer hours. This represents an annual contribution of nearly £275,000 to civil society in West Cheshire based on the current national minimum wage;
- ⇒ If this sample is representative of all Faith Communities and Groups, this contribution rises to nearly £490,000 from 740+ projects engaging 3,500+ volunteers drawn from nearly 20,000 people regularly attending a place of worship on a weekly basis. That equates to 6.08% of the total population, based on 2007 population figures; and
- ⇒ Faith Communities and Groups directly employ 150+ people.

Link Up will shortly be hosting a launch event aiming to gather West Cheshire's Faith Groups, the wider Third Sector and other community partners and agencies. The event is free of charge, open to all and will be held at **All Saints' Church in Hoole, Chester** on **Thursday 30<sup>th</sup> September** (beginning with coffee from 10.30am and finishing with lunch around 2.00pm).

With a mixture of presentation, discussion and informal networking, Audit findings will be presented along with the following break-out sessions:

- Faith in action: why Faith Groups should engage
- Connecting Faith and Third Sectors
- Communicating and connecting locally

If you would like to attend this launch event, please register your interest with **Hazel Gilbert** at [office@linkup.uk.net](mailto:office@linkup.uk.net) or by calling 01244 343464. You can read more about the Link Up and the Faith Sector Audit at [www.linkup.uk.net](http://www.linkup.uk.net)



## Shed loads of funding to bring men together!

**Men In Sheds** is moving out to reach and support more men with a successful funding reward from the Big Lottery Fund of £493,138. This innovative scheme, developed by Age Concern Cheshire, brings older men together to learn practical skills, or just to hang out in a supported shed environment. The funding will enable the very successful current scheme based in Hartford (and recently featured on BBCs "The One Show") to be rolled out to Ellesmere Port and Chester.

The scheme is designed to give men over 50 who may have experienced life-changing events - such as redundancy, bereavement or health problems - a unique opportunity to socialise, have fun, build supportive networks, learn new skills together and increase confidence. Research shows that due to well established gender roles, older men sometimes find it difficult to establish or maintain networks outside of the family or work, which can lead to men finding it difficult to manage life changes.

Cheshire West and Chester is now the UK's centre for the *Men In Sheds* movement, due to the huge amount of interest generated by this scheme from diverse organisations and individuals from across the UK and beyond. Age Concern Cheshire is planning an "official" launch in September!

For further information on *Men In Sheds*, contact [Alex.Major@ageconcerncheshire.org.uk](mailto:Alex.Major@ageconcerncheshire.org.uk) or [Ken.Clemens@ageconcerncheshire.org.uk](mailto:Ken.Clemens@ageconcerncheshire.org.uk)

## The latest on Youth Parliament activity

The United Kingdom Youth Parliament has 600 Members and Deputies, representing young people across the country. The West Cheshire Constituency corresponds with the Cheshire West and Chester Council area and is represented by two MYPs – **Daniel Palmer** (from Guilden Sutton) and **Rose Proudfoot** (from Comberbach) – with four Deputy MYPs. Daniel and Rose came top of a poll conducted in January/February and their term of office is two years. The turn-out was just under 10,000 11-18 year olds, 59% up on the previous election held in 2009.

In July, Daniel and Rose attended the UKYP National Sitting, a four day event which this year was held in Belfast. They agreed that it was a terrific experience with the opportunity to meet their fellow MYPs from every corner of the UK. Amongst the topics debated were *Climate Change, Health, Crime and Education*. The Youth Parliament was also addressed by a number of high profile speakers including John Bercow MP, Speaker of the House of Commons. The MYPs also visited the Northern Ireland Assembly at Stormont and, whilst there, were addressed by Francie Molloy MLA, the Deputy Speaker of the Northern Ireland Legislative Assembly.

Both Daniel and Rose are keen for older people to take the views of young people seriously and relish the opportunity to give their views and have a real discussion on important issues. They will have the chance to debate in the House of Commons on 29<sup>th</sup> October and the MYPs are hoping for good press coverage to ensure the UKYP voice balances out the image of young people so often created by reports about a small minority.

For further information, contact Ron Davies, Connexions at [Ronald.Davies@connexions-cw.co.uk](mailto:Ronald.Davies@connexions-cw.co.uk)

## Feedback from West Cheshire Together meeting

West Cheshire Together LSP Steering Group met on 29<sup>th</sup> July – a briefing note from this meeting was recently circulated to partners and can be viewed (along with the minutes once approved) at: [http://www.westcheshiretogether.org.uk/lsp/lsp\\_events/lsp\\_29th\\_july\\_2010.aspx](http://www.westcheshiretogether.org.uk/lsp/lsp_events/lsp_29th_july_2010.aspx)

For further information, contact Andrea Mageean, Partnership Manager, on 01244 977561 or e-mail: [andrea.mageean@cheshirewestandchester.gov.uk](mailto:andrea.mageean@cheshirewestandchester.gov.uk)

## Feedback from recent Thematic Partnership meetings

**Business, Enterprise and Culture** - current activities include:-

- The Board has designed a **flyer** aimed at helping small and medium sized businesses find and access business information. The Local Employer Service Guide will soon be made available, containing information and contact details on areas such as recruitment services and workforce development.
- Good progress is being made on **projects commissioned** by the group from West Cheshire College to:-
  - *develop an appropriate skills programme for new recruits in the care sector:* research has been undertaken with a range of employers to identify skills sets required for a range of roles and, in terms of developing suitable up-skilling activities for new or potential recruits in partnership with employers, detailed content for a skills programme has been identified;
  - *develop skills to work in the hospitality sector to meet employers needs:* the project is putting in place four distinct stages (i) undertaking research with employers to identify skills sets; (ii) development of suitable up-skilling activities; (iii) piloting and review of activities (Abode Group chose a one week programme to fill posts in their new Chester hotel); and (iv) production of resources for the activities to be offered by a variety of providers.

- The **Arson Review** is due to be launched in October/November and will be aimed at small and medium sized enterprises. Cheshire Fire & Rescue Service is to focus on prevention and a broad range of partners such as the Council's Waste Management Service have been involved.
- At its last meeting on 15<sup>th</sup> July, the Board discussed recent announcements from the new Coalition Government for the replacement of Regional Development Agencies (RDAs) with **Local Enterprise Partnerships** (LEPs). A sub-regional model was emerging as the general consensus and the Board agreed that it should be part of any future debate. There was also a call from the Board for the LEP to reflect the skills agenda.

The Board will next meet on 15<sup>th</sup> September. For further information, contact Fil Prevc, Policy Manager, on 01244 972285 or e-mail: [fil.prevc@cheshirewestandchester.gov.uk](mailto:fil.prevc@cheshirewestandchester.gov.uk)

\* \* \*

**Environmental Sustainability** – met on 20<sup>th</sup> July and received a thought-provoking presentation on **Climate Change** and what it will mean for Cheshire West and Chester, highlighting temperature and rainfall projections for the area (both temperature and autumn/winter rainfall have increased). A Local Climate Impact Profile (*LCLIP*) had recently been completed for the area which researched extreme weather events in the area over the past 16 years and look at their impacts to gauge what the future may bring if projections become a reality. The group will be looking at best practice in other areas more advanced on this issue and may facilitate a workshop in the autumn to address gaps in the document and gain validation from partners.

There was also an overview of new legislation around **Flood Risk Management** and the need to prepare now for forthcoming new regulations. It was noted that areas will need to prepare a Preliminary Flood Risk Assessment (*PFRA*) by December 2011 as part of four key stages to the regulations, which include identification of flood risk areas leading to preparation of Flood Risk Management Plans for each area at risk.

In addition, the Council's Waste Strategy Awareness team has developed a template to help identify key partners who would be appropriate to particular waste prevention and awareness campaigns. If partners would like to view the template and contribute to it, please contact Jody Sherratt, Waste Strategy Awareness Manager, on 01244 973529 or e-mail: [jody.sherratt@cheshirewestandchester.gov.uk](mailto:jody.sherratt@cheshirewestandchester.gov.uk)

The group will next meet on 21<sup>st</sup> September. For further information, contact Lyn Raynor, Partnerships Officer, on 01244 972370 or e-mail: [lyn.raynor@cheshirewestandchester.gov.uk](mailto:lyn.raynor@cheshirewestandchester.gov.uk)

\* \* \*

**Stronger Communities** – this sub-group of the Safer and Stronger Communities Group met on 22<sup>nd</sup> July and has taken on a full and varied agenda since its establishment in December 2009. Partners provided feedback towards the development of the draft West Cheshire Together *Community Engagement and Empowerment Strategy*. The partnerships Prevent Action Plan was endorsed by the Group – this Plan will assist in achievement of the partnerships non-designated Local Area Agreement Indicator NI 35: *Building resilience to violent extremism* which was adopted by the Safer and Stronger Communities Group in March. The group also heard about progress with the Migration Impact Fund project and received a presentation on the Five to Strive Creating Confident Communities project.

The group will next meet on 14<sup>th</sup> October. For further information, contact Angela Davies, Performance Manager, on 01244 977357 or e-mail: [angela.davies@cheshirewestandchester.gov.uk](mailto:angela.davies@cheshirewestandchester.gov.uk)

\* \* \*

**West Cheshire Together for Health and Wellbeing** – met on 30<sup>th</sup> July and considered the following:

- ⇒ the new **White Paper** and current consultation documents, including significant changes around the development of a Health and Wellbeing Board, the abolition of the Primary Care Trust and the development of GP Commissioning and the NHS Commissioning Board;

- ⇒ the latest developments regarding the **Strategic Plan for the Ageing Population** including future plans to engage with GPs;
- ⇒ a series of short videos to illustrate the work of **Supporting People** which helps a wide range of people including young offenders, ex-drug users, the elderly and young mums lead independent lives; and
- ⇒ the **Five Ways to Wellbeing** project and the positive framework it will provide for partners to promote their services.

In other news, the Western Cheshire local health community has developed a single information 'portal' that provides an overview of 'health and social care in Western Cheshire'. The aim is to produce a consumer-oriented website that improves public understanding of local priorities and plans and supports informed choices about health and wellbeing. The challenge is to present local information in a way that informs public debate and supports the public and patient involvement agenda. The website can be accessed at:

<http://www.westcheshirehealthandcare.nhs.uk>

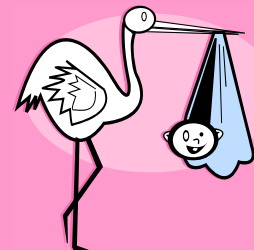
Organisations and community groups across West Cheshire are being offered the opportunity to include information about themselves in the partners section of NHS Western Cheshire's website at: <http://www.westcheshirehealthandcare.nhs.uk/How%20we%20work/Our-partners.htm> and also about the services that they provide to the local population. Organisations who would like to contribute to this website should contact Martin Parker at NHS Western Cheshire (e-mail: [martin.parker@wcheshirepct.nhs.uk](mailto:martin.parker@wcheshirepct.nhs.uk)) for further details and a template for completion.

Finally, for the latest update on the Joint Strategic Needs Assessment please go to:

[http://www.wcheshirepct.nhs.uk/default.asp?page=Joint\\_Strategic\\_Needs\\_Assessment/STAKEHOLDER%20BULLETINS.asp](http://www.wcheshirepct.nhs.uk/default.asp?page=Joint_Strategic_Needs_Assessment/STAKEHOLDER%20BULLETINS.asp)

The group will next meet on 23<sup>rd</sup> September. For further information, contact Alison Paul, Public Health Improvement Lead, on 01244 650430 or e-mail: [Alison.paul@wcheshirepct.nhs.uk](mailto:Alison.paul@wcheshirepct.nhs.uk)

**Congratulations** to Claire Wildgoose (Partnerships Manager with NHS Western Cheshire) who has given birth to a baby girl, Mia, on 28<sup>th</sup> July weighing 7lb 14oz. Claire will be on maternity leave until May 2011 and, in the meantime, her post is being covered by Alison Paul who can be contacted on 01244 650430 or e-mail: [alison.paul@wcheshirepct.nhs.uk](mailto:alison.paul@wcheshirepct.nhs.uk)



## Cheshire and Warrington Eco Handbook

The Cheshire and Warrington Public Sector Carbon Management Group has recently produced the **Cheshire and Warrington Eco Handbook**. The group consists of 24 organisations - three Local Authorities, Cheshire Fire and Rescue Service, Cheshire Police, eight Colleges, two Universities and nine NHS organisations - and is committed to engaging staff on sustainability issues. It is estimated that they employ over 100,000 staff between them.

Feedback is welcomed on the handbook which has been specifically designed to be "transferable" to other organisations and areas. Please feel free to forward it on to colleagues within your organisations for their information and use. The Eco Handbook can be viewed at:-

[http://www.climatechangenorthwest.co.uk/assets/files/documents/jul\\_10/cli\\_1278579053\\_Eco\\_Reps\\_Handbook.pdf](http://www.climatechangenorthwest.co.uk/assets/files/documents/jul_10/cli_1278579053_Eco_Reps_Handbook.pdf)

If you would like to learn more about the wide programme, contact Peter Bulmer, Project Manager Climate Change/Sustainability, on 01244 972427 or e-mail:

[peter.bulmer@cheshirewestandchester.gov.uk](mailto:peter.bulmer@cheshirewestandchester.gov.uk)

## Health Impact Assessment Policy and Screening

In June 2009, the North West Health Impact Assessment Capacity Building Programme (NW HIA CBP) conducted an online baseline assessment of Health Impact Assessment (HIA) capacity and capability across the North West. This assessment found that whilst there is considerable HIA activity and awareness in some parts of the North West, in other areas there is a real gap in capacity, knowledge and skills. Across the region HIA is not routinely and systematically used to inform policy and practice. The June issue of the Partnerships Bulletin publicised the availability of training to address this issue and provide organisations with increased capacity and capability so that they can undertake HIAs and make decisions based on the best available evidence. The purpose of this article is to explain what HIA is about and promote its use.

**What is HIA?** It is a tool by which a policy, programme or project may be judged as to its potential effects on the health of the population and the distribution of those effects within the population. In addition to assessing health consequences, it also produces recommendations as to how the good consequences for health could be enhanced and how the bad consequences could be minimised or avoided. It aims to predict not only the overall consequences for a population but also the distribution of health impacts in that population, which groups benefit and which groups lose out. There are a variety of HIA tools available which can be viewed at:

[www.nwph.net/nwhia/default.aspx](http://www.nwph.net/nwhia/default.aspx)

**The Way Forward:** The NW HIA CBP aims to embed HIA into the culture of policy making within and between organisations. HIA complements and supports other aspects of impact assessment such as Environmental Impact and Equality Impact Assessment. Further work is being undertaken locally to look at how this can best be taken forward. For further information please contact: [equalities@cheshirewestandchester.gov.uk](mailto:equalities@cheshirewestandchester.gov.uk)

## Feedback on recent Community Forums

In Rural West, new and innovative ways to encourage residents to participate in Community Forums are being explored. The **Neston, Parkgate, Ledsham and Willaston Forum** on 9<sup>th</sup> July took an innovative approach by combining a Community Forum with a Wellbeing Event. Held at Neston Town Hall during the day rather than the traditional evening meeting, the event coincided with Neston's weekly Market to maximise opportunities for promotion. Residents were able to 'drop-in' to the event rather than sit through a formal meeting. Over 200 people participated in the event which offered information on a range of health aspects including physical and social exercise, holistic therapy and general advice on maintaining good health. There was even a belly dancing demonstration performed by a local group which has resulted in a number of residents signing up for classes!



In another innovative approach, **Mickle Trafford Community Forum** on 21<sup>st</sup> July took the form of an outdoor BBQ event at Barrow which attracted families, keen walkers and local Parish Councillors. Thankfully the weather stayed dry and over 50 people, including children, joined together for a walk down a local bridleway to hear about issues affecting pathways and public rights of way from Council Green Space officers. Police Inspector Hodgson reported on the key issues in the area over recent weeks and forthcoming changes to policing staff. There was also an opportunity to discuss the current consultation on the future of recycling and waste collections. Cheshire Fire & Rescue Service provided the BBQ's, gave a presentation on BBQ safety and also brought along a fire engine.



For further information, contact the Rural West Area Team on 01244 973334 or e-mail: [ruralwest@cheshirewestandchester.gov.uk](mailto:ruralwest@cheshirewestandchester.gov.uk)

## Update on staffing changes in Partnerships & Area Working

The following appointments have recently been made within the Partnerships and Area Working Team at Cheshire West and Chester Council:-

- ⇒ **Mark Simmons** has been appointed to the post of **Area Manager for Northwich & Rural North** with effect from 1<sup>st</sup> September. For the past seven years Mark has been employed as Neighbourhoods Team Manager with Oldham Council, managing six multi-agency teams responsible for engaging communities and co-ordinating local service delivery to improve the quality of life of local residents. Prior to this, Mark held a number of management roles with Tameside MBC, City of Salford Council and Oldham Council as well as a five year stint as a Police Officer with Greater Manchester Police. Confirmation of his contact details will appear in the September bulletin.
- ⇒ **David Tai** has been appointed to the post of **Interim Area Manager for Ellesmere Port** for the period 2<sup>nd</sup> August 2010 to 31<sup>st</sup> March 2011 (following the secondment of Sean Daley to Blacon – see below). David will provide help with the delivery of the ‘Our Place’ Delivery Plan, working with partners on the Ellesmere Port Area Partnership Board and assisting with the management of the local governance arrangements, including Community Forums. David can be contacted on 0151 356 6345 or e-mail: [david.tai@cheshirewestandchester.gov.uk](mailto:david.tai@cheshirewestandchester.gov.uk)
- ⇒ **Sean Daley** (Ellesmere Port Area Manager) and **Janet Gittins** (Blacon Neighbourhood Manager) will be undertaking a temporary role (for the period 2<sup>nd</sup> August 2010 to 31<sup>st</sup> March 2011) in providing dedicated project management support to take forward a new and innovative approach to neighbourhood management across the **Blacon community**. This is a major project linked to the investment and regeneration of the Blacon Parade (a £24m project planned for next year) to establish an Asset Management Company to oversee the overall management of neighbourhood activity. The company will own and manage a significant number of local assets (properties and land) including housing and community facilities. The first task will be a major review of all the public and community services delivered within the Blacon community.

To ensure a close working relationship with Chester & District Housing Trust as the lead sponsor for the programme, Sean and Janet will be based with the Trust at Centurion House, Northgate Street, Chester. Their contact details are as follows:-

[sean.daley@cheshirewestandchester.gov.uk](mailto:sean.daley@cheshirewestandchester.gov.uk) (Tel: 01244 305584)

[janet.gittins@cheshirewestandchester.gov.uk](mailto:janet.gittins@cheshirewestandchester.gov.uk) (Tel: 01244 305428)

## Chair appointed to Ellesmere Port Development Board

**Robert Mee** has been appointed the first Chairman of Ellesmere Port’s Development Board. Former Chief Executive of Bank of Scotland Retail Business, Robert (59) was selected from 16 candidates to lead the partnership of public and private sector expertise formed to carve out a bright future for the town.

Cheshire West and Chester Council has led the formation of the Development Board to oversee investment in the area with the aim of improving employment, the environment and general quality of life. Local MP Andrew Miller has been invited to become a member of a 10-strong Board and applications will be invited for other Board members towards the end of August. Closing date for applications will be 22<sup>nd</sup> September with interviews on 12<sup>th</sup> / 13<sup>th</sup> October.

For further information, contact Tony Clark on 01244 973168 or e-mail:

[tony.clark@cheshirewestandchester.gov.uk](mailto:tony.clark@cheshirewestandchester.gov.uk)

## Community Forum round-up

As we go to print, the following Community Forums are due to take place (where times and venues are not yet known, these will shortly appear on the West Cheshire Together website at [http://www.westcheshiretogether.org.uk/community\\_forums.aspx](http://www.westcheshiretogether.org.uk/community_forums.aspx)):-

Northwich West & Abbey	<i>Thursday 2<sup>nd</sup> September (time and venue to be confirmed)</i>
Boughton Heath, Vicars Cross & Overleigh	<i>Thursday 2<sup>nd</sup> September, 6.30pm, Queens Park High School</i>
Blacon	<i>Tuesday 7<sup>th</sup> September (One Voice for Blacon meeting) and Tuesday 5<sup>th</sup> October (Community Forum) – both at 5.30pm at Blacon High School (Community Wing)</i>
Winsford	<i>Wednesday 8<sup>th</sup> September, 7.00pm, Winsford Library</i>
City	<i>Monday 13<sup>th</sup> September, 6.00pm, St Werburgh's Social Club, Brook Street, Chester</i>
Eddisbury	<i>Tuesday 14<sup>th</sup> September, 7.00pm, Tarporley British Legion</i>
Gowy	<i>Tuesday 14<sup>th</sup> September, 6.30pm, Christleton High School</i>
Hoole, Upton & Newton	<i>Monday 20<sup>th</sup> September, 7.00pm, Upton High School (Library)</i>
Central, Grange, Westminster & Rossmore	<i>Monday 20<sup>th</sup> September, 6.00pm, Ellesmere Port Civic Hall</i>
Neston, Parkgate, Ledsham & Willaston	<i>Wednesday 22<sup>nd</sup> September, 6.30pm, Neston Cricket Club</i>
Broxton	<i>Thursday 23<sup>rd</sup> September, 6.30pm, High Street Church, Malpas</i>
Groves, Whitby, Sutton & Manor	<i>Wednesday 29<sup>th</sup> September, 6.00pm, Sea Cadets HQ, off Capenhurst Lane</i>
Frodsham, Helsby & Weaver	<i>Wednesday 6<sup>th</sup> October, 6.00pm, Weaverham Community Centre</i>
Northwich East, Shakerley & Marbury	<i>Thursday 7<sup>th</sup> October, 6.00pm, Northwich Memorial Hall</i>
Mickle Trafford	<i>Wednesday 20<sup>th</sup> October, 6.30pm, Shell UK Excel Centre</i>

Other forthcoming local events:-

<b>Monday 16<sup>th</sup> August - Saturday 21<sup>st</sup> August</b>	A multi-agency Safer Stronger week long series of events centred on the <b>Kingsway area of Chester</b> , culminating in Youth and Community Fun Day at Lime Wood Field between 11.00 am and 3.00 pm on the Saturday.
<b>Sunday 22<sup>nd</sup> August (2.00 – 4.00 pm)</b>	<b>“Get Together at the Groves” in Chester.</b> Find out: how to move a Giant; wormery and composting; benefits advice; cycling in Chester (get your free bike bell) and win a family ticket to Chester Zoo. There will also be a live water rescue demonstration.

## Local Council's Seminar

Cheshire West and Chester Council's Overview & Scrutiny Committee is currently undertaking a review of the relationship between the Council and the 97 Local Councils within the West Cheshire area. Following on from two seminars held in May and July, a third seminar has been scheduled for **Wednesday 15<sup>th</sup> September** at **Tarvin Community Centre**, Meadow Close, Tarvin, Chester (refreshments from 6.30pm for a 7.00pm start). The agenda will include:-

- ⇒ **Support package to Local Councils** – officers have been looking at the potential for implementation of a numbers of ideas which were discussed at the May seminar;
- ⇒ **Double Taxation / Grants for Street Orderlies** – an update on progress since the July seminar;
- ⇒ **Parish Planning** – ensuring Local Councils are at the heart of the process.

All Town and Parish Councillors and Clerks within the West Cheshire area are invited to attend and give their views on how the relationship between the Council and Local Councils could be further developed to improve services for local people.

For those interested in attending, book your place with Penny Housley, Overview & Scrutiny Senior Manager, on 01244 975972 or e-mail: [penny.housley@cheshirewestandchester.gov.uk](mailto:penny.housley@cheshirewestandchester.gov.uk)

## Round-up of activity in Ellesmere Port

The following is a brief round-up of recent community activity within the Ellesmere Port area:-

- ⇒ A “Shaping Stanney” event was held on 3<sup>rd</sup> July to re-launch and recruit for a Residents’ Association;
- ⇒ Newly formed Rossmore Residents’ Association held their first “Family Fun Day” event on 24<sup>th</sup> July attended by around 250 people – activities included a BBQ, singers and a huge tug of war;
- ⇒ A new “Our Place” market stall opened on 2<sup>nd</sup> August for a trial period of 6 weeks for all Ellesmere Port residents to seek advice from a wide range of partners in a relaxed atmosphere whilst out shopping (Unit 78 in Ellesmere Port market);
- ⇒ ‘Community Dinners’ have recently been held at St Saviours Catholic Primary School and Brookside Primary School, resulting in the setting up of a community holiday club for families to attend during the summer holidays;
- ⇒ A Community BBQ was held in the sunshine on 11<sup>th</sup> August on the Parklands estate and was attended by around 30 people; and
- ⇒ A ‘Play Day’ was held on 12<sup>th</sup> August on Bunbury Green, Stanney with a fantastic turn-out despite the changeable weather.

On Wednesday 25<sup>th</sup> August, Stanlaw Abbey Children’s Centre are hosting a “Family Fun Day” - further details can be obtained by contacting the Centre on 0151 337 6425. On the same day, PCSO Claire Holmes is holding a “Play Day” on Seacombe Drive Park with support from local ward Councillors Bob Crompton and Kimberley Anderson through their Members’ budget.

For further information on any of the above, contact the Ellesmere Port Area Team on 0151 356 6562.

### **FEEDBACK.....your views or news**

Your comments on this bulletin, or any partnership news you would like to share, should be forwarded to Lyn Raynor, Partnership Officer, on 01244 972370 or e-mail:

[lyn.raynor@cheshirewestandchester.gov.uk](mailto:lyn.raynor@cheshirewestandchester.gov.uk)