

Partnerships West

A regular update on partnership developments in West Cheshire



WELCOME....to this month's news and activity from the West Cheshire Together partnerships framework.

Cheshire West and Chester Council has submitted a bid to the Coalition Government in the hope of being selected to take part in a pilot scheme to deliver a **“Local Integrated Services” (LIS) approach to service delivery in Ellesmere Port.**

This will mean working with partners to tailor services to meet local needs, building on the Total Place initiative and working directly with central government to implement the drive towards a ‘Big Society’. The approach also supports the introduction of Place-based Budgets which would bring together different streams of public spending into a single budget to be managed at a local level.

If the submission is successful, as well as raising the profile of the Council and partners, it also increases the opportunity to engage with other pilot areas to share and learn from best practice.

The submission includes proposals to:-

- ⇒ *devolve assets to local communities;*
- ⇒ *develop better housing with new investment, exploring opportunities for an alternative delivery model for social housing;*
- ⇒ *focus on re-offending using the community sector and partners to provide one-to-one support;*
- ⇒ *develop local skills and employment;*
- ⇒ *tackle the root causes of poor health outcomes, for example smoking, alcohol, teenage pregnancies; and*
- ⇒ *unlock economic potential, securing opportunities for residents to gain employment from major local developments.*

This proposed approach takes the Council's commitment to designing services around the needs of the customer and communities one step further and, regardless of whether the submission to be part of this pilot is successful or not, the Council will continue to work with all partners to develop its approach to Place-based services and budgets.

A project team is currently being established to look carefully at how this approach can be developed over the next six months.

For further information, contact Alison Armstrong, LSP Director, on 01244 973336 or e-mail: alison.armstrong@cheshirewestandchester.gov.uk

INSIDE THIS ISSUE:

- ⇒ **Health White Paper:**
Consultation
- ⇒ **Capital Vision Consultation:**
Extension for responses
- ⇒ **Ageing Well in Cheshire:**
A Strategic Plan
- ⇒ **Health Impact Assessment:**
Training dates
- ⇒ **Latest on Local Enterprise Partnerships**
- ⇒ **Community Forums:**
Feedback and forthcoming dates
- ⇒ **News on the forthcoming Census 2011**

This recently published White Paper sets out the Government's plans for radical reform of the NHS, with significant implications for the role of local authorities and for Local Strategic Partnerships. A series of consultation documents have been released and responses are invited **by 11 October 2010**. Of particular interest is the document entitled "Local Democratic Legitimacy in Health".

Localism is one of the defining principles of the present Government: pushing power away from the centre out to communities. The White Paper sets out how this will happen in health by devolving real decision-making powers to patients and GPs from 2012/13. The public health and health improvement responsibilities of Primary Care Trusts will be transferred to local authorities.

This document sets out proposals to strengthen the role of local government in health by:-

- (i) **local authorities taking on local public health improvement functions:**
Each local authority will take on the function of joining up the commissioning of local NHS services, social care and health improvement. They will be responsible for leading joint strategic needs assessments and promoting collaboration on local commissioning plans;
- (ii) **local authorities having a new role in promoting integration:**
Local authorities will be required to establish statutory 'health and wellbeing boards'. The White Paper suggests that these can build on existing LSP arrangements. The boards 'will allow local authorities to take a strategic approach and promote integration across health and adult social care, children's services, including safeguarding, and the wider local authority agenda'.

The White Paper also promises that Government will simplify and extend the use of powers that enable joint working between the NHS and local authorities. This should make it easier for commissioners and providers to adopt partnership arrangements; and
- (iii) **local HealthWatch organisations acting as independent consumer champions, accountable to local authorities:**
This will give local people a greater say in decisions which affect their health and care and provide a clear route to influence the services they receive. The intention is to build on current statutory arrangements so that the Local Involvement Networks (LINKs) will be given additional functions and funding to become local HealthWatch which will act as local consumer champions across health and care.

Further details and the opportunity to respond to the consultation can be found at:
www.dh.gov.uk/liberatingthenhs

Do you want to find out more about **Parish Planning and Village Design Statements**? Broxton Community Forum will be hosting a free workshop-style event on **Thursday 7th October** (6.00pm for a 6.30pm start) at the **Barbour Institute, Tattenhall**.

The workshop will give you the opportunity to find out more about Parish Plans and Village Design Statements - what they are; the process and how to develop one for your area; access to help, advice, support, guidance and funding; and the benefits and experience of others.

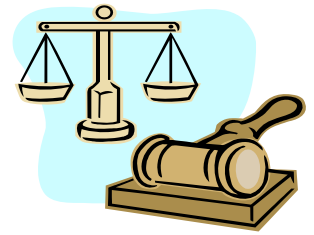
Places are limited for up to 2 people per parish. To register your interest and to book your place, please contact Elaine Grant on 01244 972224 or Emma Stevens on 01244 972671 or e-mail: ruralwest@cheshirewestandchester.gov.uk

Local Crime: Community Sentence (LCCS) Project

Would you like to learn more about how offenders are sentenced in the local courts and how they are supervised by the Probation Service in the community?

Cheshire Magistrates and staff from Cheshire Probation are working together to:-

- ✓ *improve public confidence in sentencing; and*
- ✓ *raise awareness of the effectiveness of community penalties*



This is achieved through the Local Crime: Community Sentence (LCCS) project which involves Magistrates and Probation staff, working in pairs, giving presentations to members of the public in a wide range of organisational settings. The staff are keen to meet up with community groups and organisations who would like to know more about how offenders are dealt with. This is done by involving the audience in a sentencing exercise, using a case study of an offender and their offence. The audience will gain an insight into how decisions are arrived at in determining the most appropriate sentence to impose. The presentation will then continue to outline how the Probation Service supervises offenders in the community and what sanctions can be imposed on those who do not fully comply.

This is a lively and interactive presentation where members of the audience are invited to express their own opinions and views about the sentencing of offenders. Its aim is to increase awareness of what takes place in the criminal courts and to provide a greater understanding of how the criminal justice system works. The presentations are free of charge and last approximately one hour. You can register your interest by completing an enquiry form on the Cheshire Probation website at <http://www.cheshireprobation.org.uk/contact-us/contact-form.php>

For more information, contact Liz Gaughran, LCCS Co-ordinator, on 01244 394500 or e-mail: liz.gaughran@cheshire.probation.gsi.gov.uk

Capital Vision Consultation: Deadline for comments extended

An invitation to West Cheshire residents to influence Cheshire West and Chester Council's investment and regeneration plans for the next ten years has had a record response. The public interest, over 700 replies so far, has been so encouraging that the Council is to extend the consultation for a further fortnight. Originally due to end on 10th September, the **Capital Vision** consultation will now continue until **Friday 24th September**.

'Have Your Say' forms were delivered to every household across the borough in July, as part of the public services 'Talking Together' newspaper publication. Initial responses have indicated that schools, roads and social care facilities are among residents' top priorities. Partners and stakeholders have prioritised schools, housing and technology as their top three.



Stage two of the consultation involves discussions with private sector partners and stakeholders and stage three will involve meetings with local residents on the Council's 2,500-strong Citizens' Panel. Final results will be analysed in detail by the Council's Research, Intelligence and Consultation Team at the end of November and the results will help the Council plan its expenditure over the next ten years.

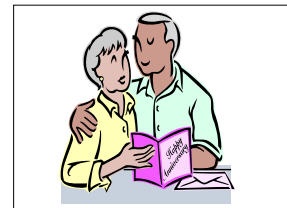
The 'Have Your Say' document can be accessed at:

<http://www.cheshirewestandchester.gov.uk/default.aspx?page=10208> Please ring 0300 123 8 123 if you have any queries.

Ageing Well in Cheshire: A Strategic Plan

Work is underway to produce an effective Strategic Plan for improving the quality of life for those aged 50 and over in West Cheshire. We want to ensure that West Cheshire is a good place to grow older, where all partners work together with the community to support independent living.

A project mandate was produced and endorsed by the West Cheshire Together for Health and Wellbeing Thematic Partnership at its meeting in March and a project team has since been established comprising representatives from Health, Police, Fire & Rescue Service, Third Sector and all Borough Council directorates.



Work already completed includes mapping of current services as well as looking at what services will be needed in the future. In order to get the views of older adults,

an engagement workshop event was held in July at Trafford Hall with representatives from older adult groups. Five themes were considered at the workshop:-

- ⇒ **Economic wellbeing** - includes aspects of employment and benefits information;
- ⇒ **Attractive and sustainable environment** – includes issues such as transport, housing, green spaces;
- ⇒ **Safe and strong communities** - includes safeguarding, and fear of crime aspects;
- ⇒ **Health and wellbeing** - includes physical and emotional wellbeing; and
- ⇒ **Increased choice and positive contributions** - includes information to allow effective choices and volunteering opportunities.

All the information gathered at the event is now being collated and will be used to influence the shaping of the Strategic Plan.

The West Cheshire Together Ageing Well project team is holding a workshop on 16th November which will be facilitated by the Department for Work and Pensions and Government Office North West. The workshop is targeted at key partners from across the partnerships framework and key stakeholders, including older adults themselves. This event will help to test out the draft Strategy on how well we are addressing the opportunities and needs which will arise as a consequence of the changing demographic profile of our ageing population, the changing policy and the financial situation.

For further information, contact Gordon Atkinson on 01244 977411 or e-mail: gordon.atkinson@cheshirewestandchester.gov.uk

Health Impact Assessment Training

The International Health Impact Assessment Consortium (IMPACT) is conducting one day workshops on Health Impact Assessment (HIA) Screening and Policy Development, aimed at policy leads and decision-makers in Primary Care Trusts, Local Authorities, partners and any individuals required to undertake HIA screening of their policy or strategy. The one day workshops are as follows:-

Friday 8 th October	9.30am – 4.30pm	Sycamore Room, The Heath, Runcorn
Friday 12 th November	9.30am – 4.30pm	Liverpool John Moores University

The workshops are free of charge, though places are limited to 20 per event and offered on a first come, first served basis. Contact Jane Harris at Liverpool John Moores University at: j.harris1@ljmu.ac.uk

Cheshire & Warrington Means Business - Latest on Local Enterprise Partnerships

On 6th September, Robert Davis, Chairman of the Cheshire and Warrington Enterprise Commission, delivered the sub-region's unique prospectus – **Cheshire and Warrington Means Business** – for a Local Enterprise Partnership (LEP) in a bid to ensure a bright future for the “jewel in the economy of the Northwest”.

Local Enterprise Partnerships – strategic economic partnerships between private, public and voluntary sectors – are the Government's suggested replacements for Regional Development Agencies. Whilst the Government hasn't yet outlined the detailed functions of a LEP, they will be vital in sourcing funding to drive the creation of economic growth and jobs.

The 20-page prospectus had been drawn up after full consultation with all stakeholders and it pledges to provide the ideal environment for businesses to grow, access to the right skills, supportive and efficient public services, effective infrastructure and utilities – in a beautiful part of the country for people to enjoy.

Growth targets envisaged in the LEP submission include:-

- over 20,000 new jobs created with a key focus on manufacturing and exports
- a rise in population of around 100,000 involving the need for 70,000 new homes
- a £10billion-plus increase in GVA (a measure of economic output) to around £30billion through acceleration growth of new businesses and start-ups.

It is hoped to hear news about the bid by the end of October and, following this, a partnership will be established in shadow form from February 2011 and operational from March.

For further information, contact Fil Prevc, Policy Manager, on 01244 972885 or e-mail: filip.prevc@cheshirewestandchester.gov.uk

News from the Winsford & Rural East area

A key priority theme for this Area Partnership Board is to improve the health of those residing in Winsford & Rural East and a number of issues are currently under development in relation to this such as increasing availability of sites to grow fruit and vegetables, publishing a healthy cookbook, undertaking healthy cookery classes and promoting healthy walks for the community.

To complement this work, a workshop has been arranged across both Winsford & Rural East and Northwich & Rural North areas to improve communication between GPs and the Area Partnership Boards.

The school holidays have seen significant activity amongst agencies in delivering activities for young people in Winsford. The Area Partnership Board has contributed to this through the co-ordination of a summer activities booklet for parents and young people, informing them of the wide range of activities available. This initiative has proved successful and will be repeated on a seasonality basis during school holidays. To complement this work, the Area Partnership Board will be monitoring this to assess whether the activities delivered are meeting the needs of the young people of Winsford.



Please note that the Winsford & Rural East Area team have new telephone numbers:-

Ewan McHenry (Area Manager)	01606 288766
Trish Johnson (Community Engagement Officer)	01606 288765
Paul Hickson (Neighbourhood Manager)	01606 288767

Third Sector Assembly latest

The Third Sector Assembly (TSA) has been busy over the summer developing its website (due to launch later in the Autumn), keeping members up to date with policy and other changes arising from the new coalition Government (Big Society, public spending cuts, etc.) and progressing the work on accommodation for third sector organisations in Chester and for a multicultural centre - in partnership with Cheshire West and Cheshire Council and Cheshire, Halton and Warrington Race and Equality Centre (CHAWREC).

An up to date **Contacts List** for the TSA Management Group has recently been produced. The Management Group consists of representatives from a range of networks and these representatives can be contacted by organisations and groups to raise issues both at the TSA Management Group meetings or through those representatives at the LSP, Thematic Groups or Area Partnership Boards.



David Wood from Cheshire Voluntary Arts Network has recently joined the TSA Management Group to represent Arts Groups within the Third Sector on the TSA.

A **Briefing Note on the Compact** (national principles and how this will work in the West Cheshire area) has been produced by the TSA in response to requests from groups and organisations who wanted to know more about the Compact.

For copies of the documents mentioned above, or for further information about the Third Sector Assembly, contact Anne Lancaster, TSA Co-ordinator, on 07801 015261 / 01244 323527 or e-mail: anne.lancaster@cheshirewestandchester.gov.uk / anne.lancaster@chesterva.org.uk

CONTACT DETAILS CONFIRMED

The new Area Manager for Northwich & Rural North, **Mark Simmons**, started in post on 1st September and is based at Northwich Information Centre, 1 The Arcade, Northwich, CW9 5AD. He can be contacted on 01606 353537 or e-mail: mark.simmons@cheshirewestandchester.gov.uk



Interested in Volunteering?

Would you like to become a Volunteer? Come along and meet representatives of local organisations who will be available to give advice on volunteering. Find out what its like to make a difference, gain new skills and get involved in your local community.

Date: *Tuesday 14th September*
Time: *3.30 – 6.00pm*
Venue: *Frodsham Community Centre, Fluin Lane, Frodsham*

For further information, contact Fiona Dunning on 01606 353526 or e-mail: fiona.dunning@cheshirewestandchester.gov.uk

The Chairs and Vice Chairs of the five Thematic Partnerships met with the five Area Partnership Board Chairs on 16th August and the minutes of this meeting can be viewed on the West Cheshire Together partnerships website at: http://www.westcheshiretogether.org.uk/strategic_themes.aspx

Feedback from recent Community Forums

Northwich West & Abbey – met on 2nd September at Davenham Methodist Church Hall, continuing the theme of moving the forum around the two respective electoral wards. The main topics for discussion included an update on Weaver Valley Partnership Board and a presentation from local action group Stop Incinerators Disguise (SID) which was well received by those in attendance.

Date of next meeting: *Thursday 2nd December (time and venue to be confirmed)*

Boughton Heath, Vicars Cross & Overleigh – met on 2nd September at Queens Park High School and residents had the opportunity to discuss their issues directly with local ward members and officers from the Council, Fire & Rescue Service and Cheshire Police. The community safety briefing given jointly by both the Police and the Council's Community Safety Wardens was well received, as were presentations on Benefits, the Council's Trading Standards services and the West Cheshire Credit Union.

In addition, local Handbridge residents raised the issue of a pending planning application to extend the Ship Inn into the adjoining community park, Edgars Fields. They were advised by Council officers present on how to make their comments and views known to the Planning Office during the consultation period before the deadline of 20th September.

Date of next meeting: *Tuesday 23rd November, Pulford Village Hall*

Winsford – met on 8th September at Winsford Library and was well attended with upwards of forty members of the community present. It was an opportunity for the new uniforms for students of the Winsford E-Act Academy to be shown to the community. Those in attendance were also updated on the opening of the Academy, the site option appraisal and the decision-making process as to whether a new Academy will be built in Winsford. The key issues raised by attendees at the forum were in relation to maintenance of open spaces and obstructive parking outside the former Verdin School site.

Date of next meeting: *Wednesday 8th December (time and venue to be confirmed)*

Elton Wellbeing event

The Rural West Area Team are continuing their programme of Wellbeing events in response to improving access to services and community engagement and following recent successful wellbeing events in Malpas and Neston.

In conjunction with NHS Western Cheshire, a Wellbeing event has been organised for **Thursday 30th September** (from 9.00am to 1.30pm) at **Elton Community Centre**, School Lane, Elton, Nr Chester.

There will be information, advice and freebies around ways to create a healthier lifestyle for yourself and your family including:-

- ✓ ways to keep fit and active (cycling and walking)
- ✓ step-by-step weight management programme
- ✓ Children's Centre activities
- ✓ help to stop smoking
- ✓ Age UK for information and advice
- ✓ Mocktail Bar! (alcohol-free cocktails)
- ✓ Free raffle – win a smoothie maker!



For further details, contact the Rural West Team on 01244 972224 or e-mail: ruralwest@cheshirewestandchester.gov.uk

Forthcoming Community Forums

As we go to print, the following Community Forums are scheduled to take place:-

City	Monday 13th September, 6.00pm, St Werburgh's Social Club, Brook Street, Chester
Eddisbury	Tuesday 14th September, 7.00pm, Tarporley British Legion
Gowy	Tuesday 14th September, 6.30pm, Christleton High School
Hoole, Upton & Newton	Monday 20th September, 7.00pm, Upton High School (Library)
Central, Grange, Westminster & Rossmore	Monday 20th September, 6.00pm, Ellesmere Port Civic Hall
Neston, Parkgate, Ledsham & Willaston	Wednesday 22nd September, 6.30pm, Neston Cricket Club
Broxton	Thursday 23rd September, 6.30pm, High Street Church, Malpas
Groves, Whitby, Sutton & Manor	Wednesday 29th September, 6.00pm, Sea Cadets HQ, off Capenhurst Lane
Frodsham, Helsby & Weaver	Wednesday 6th October, 6.00pm, Weaverham Community Centre
Northwich East, Shakerley & Marbury	Thursday 7th October, 6.00pm, Northwich Memorial Hall
Mickle Trafford	Wednesday 20th October, 6.30pm, Shell UK Excel Centre

Annual Haygarth Lecture

Details of the 2010 Annual Haygarth Lecture are as follows:-

Date: *Wednesday 13th October*
Time: *Tea/coffee from 5.30pm and lecture from 6.15pm*
Venue: *University of Chester (main campus), upstairs lecture theatre, Binks Building*
Speaker: *Professor John Ashton CBE*
Title: *"Back to the Future – Again?"*

Professor Ashton has provided the following as a flavour of his address:-

"Following this year's general election, it was announced that there would be no more top down reorganisations of the NHS followed almost immediately by news of a massive top down reorganisation of the NHS. Most of us have now lost count of the number of reorganisations since the NHS was established but it is more than 20 and equates to once every two or three years

The good news is that, at least in part, Public Health is coming home to Local Government where it belongs and where it was so productive for well over 100 years before the disastrous reorganisation of Local Government in 1974. Taken together with the news that a Public Health service is to be created - are we at last on the verge of a new age for Public Health in England or will the merry-go-round continue?"

If you would like to attend, please contact Jess Hitchcock at the University on 01244 511740 or e-mail: j.hitchcock@chester.ac.uk

Every ten years the Office for National Statistics carries out a **census** to find out more about the people who live in England and Wales and about the make-up of local neighbourhoods. The next census takes place on Sunday 27th March 2011 when questionnaires will be sent out to around 25 million households to complete.

Cheshire West and Chester Council is working with the local census team to ensure our communities have the help and guidance needed to complete the questionnaires and will update you on this as we move nearer to the March 2011 census date.



Over the coming months around 200 staff will be recruited by the Cheshire West census team for the delivery and collection of questionnaires. Details of the jobs can be found at: www.censusjobs.co.uk

For further information, contact Alistair Jeffs, Census Liaison Manager, Cheshire West and Chester Council on 01244 972228 or e-mail: alistair.jeffs@cheshirewestandchester.gov.uk or visit the website at: <http://2011.census.gov.uk/>

Pakistani Monsoon Benefit Dinner

Sunday 26th September
Restaurant 1539 at Chester Racecourse
(7.00pm for 7.30pm sit down)

Tickets £17.50 (two courses, including raffle and auction)

Tickets available from:

Bhupinder Lace on 01244 320643

or

CHAWREC on 01244 400730



FEEDBACK.....your views or news

Your comments on this bulletin, or any partnership news you would like to share, should be forwarded to Lyn Raynor, Partnership Officer, on 01244 972370 or e-mail:

lyn.raynor@cheshirewestandchester.gov.uk