



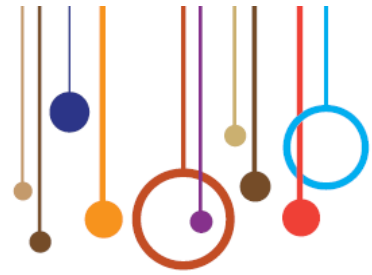
**Western Cheshire**  
*Your partner for longer healthier lives*



# Developing Tomorrow

## NHS Reforms

***Helen Bellairs***  
***Chief Executive***  
***NHS Western Cheshire & NHS Warrington***



# NHS Landscape



**Western Cheshire**  
*Your partner for longer healthier lives*

**Secretary of State**  
**Department of Health**

**Department of Public Health**



**Care Quality Commission**

**Economic Regulator**

**NHS Commissioning Board**

**Regional Accounts Manager**

**NHS Commissioning Board  
Regional Executive**

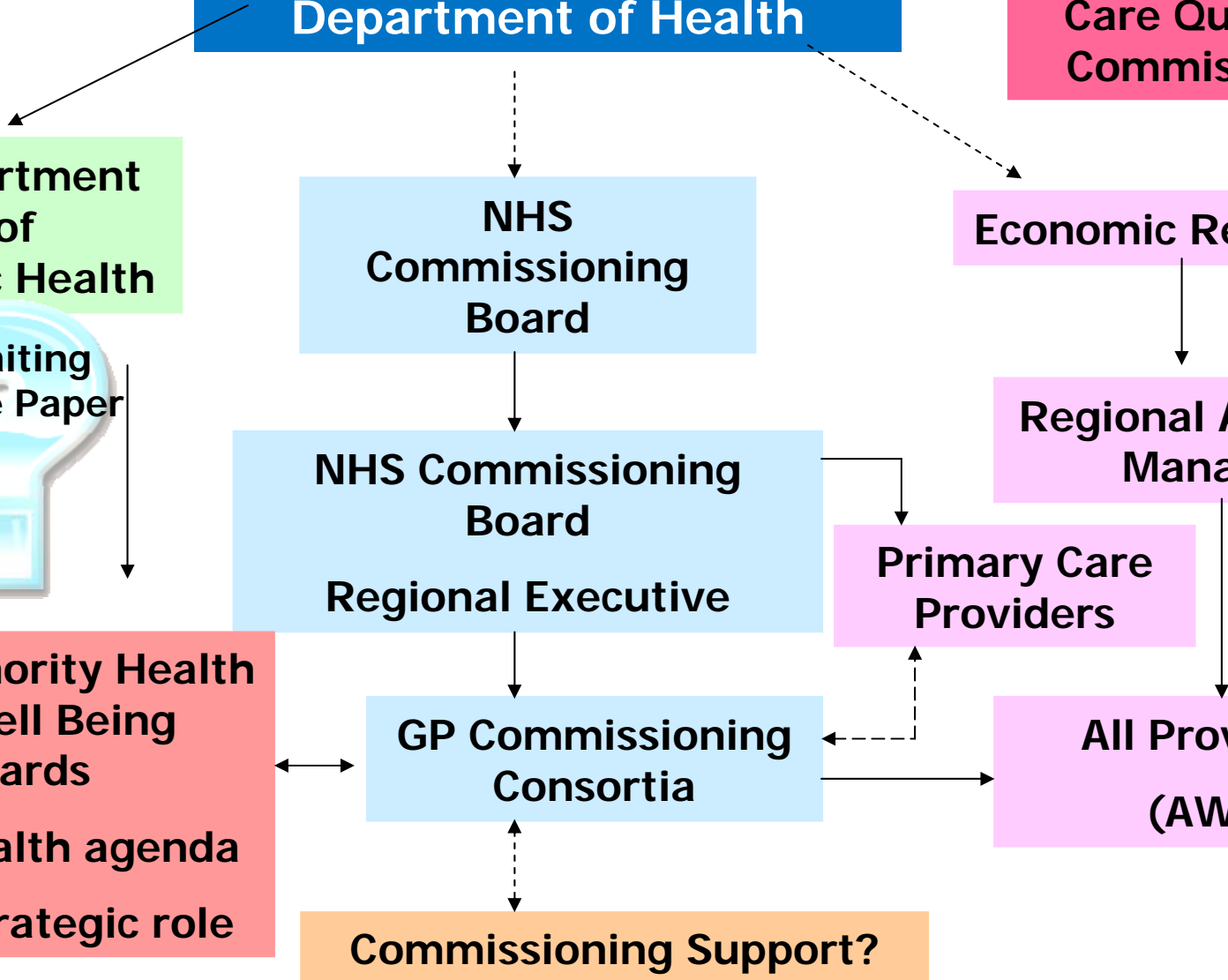
**Primary Care Providers**

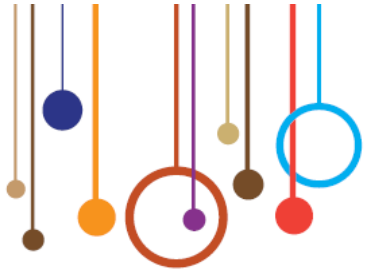
**Local Authority Health and Well Being Boards**  
**Public health agenda**  
**Bigger strategic role**

**GP Commissioning Consortia**

**All Providers (AWP)**

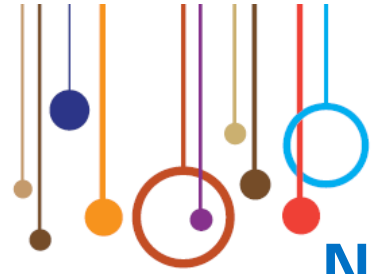
**Commissioning Support?**





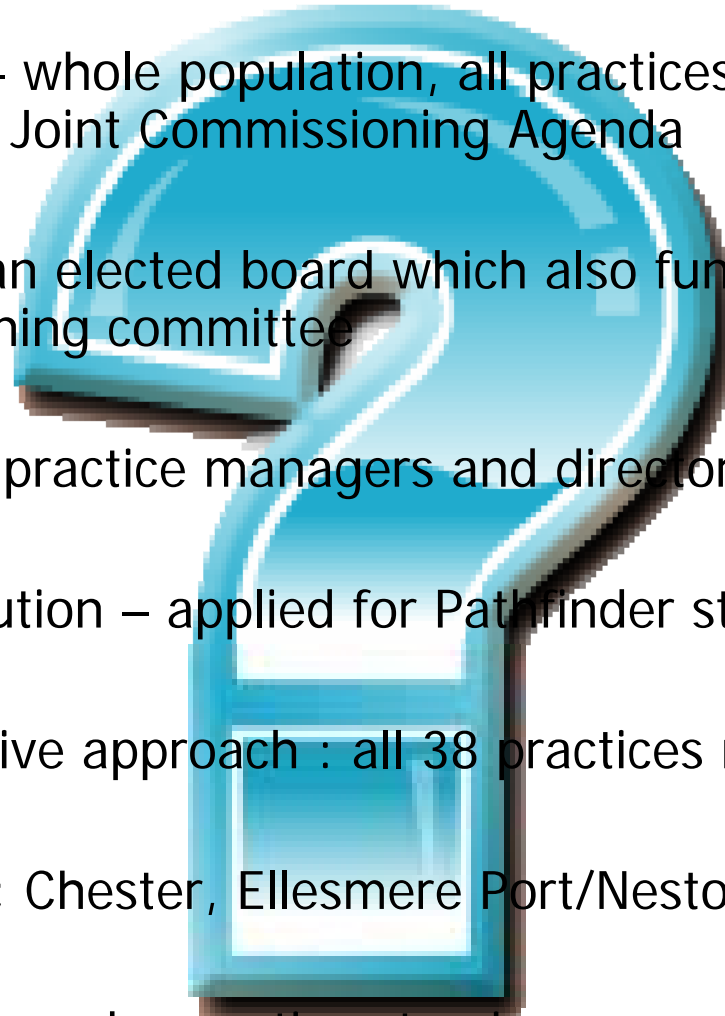
## Direction of Travel?

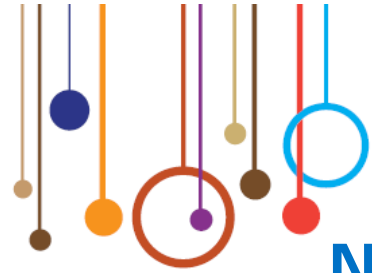
- GPs Commissioning
- Health and Wellbeing Boards
- Local Authority Take on Public Health Role
- New Regulator for Economic and Quality Regulation
- Transforming Community Services by April 2011
- NHS Commissioning Board



## NHS Western Cheshire: Current Position

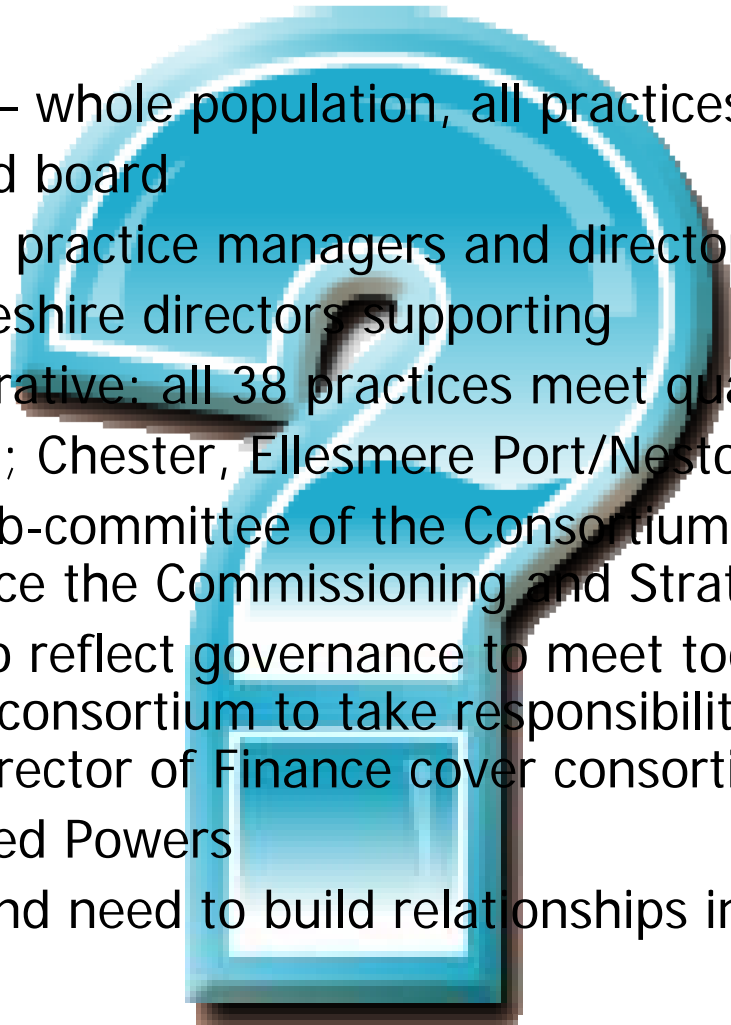
- One Consortium – whole population, all practices – needs to work with Vale Royal on the Joint Commissioning Agenda
- Currently run by an elected board which also functions as the Practice Based Commissioning committee
- Board = 8 GPs, 3 practice managers and director
- Revisiting Constitution – applied for Pathfinder status from January
- Have a Collaborative approach : all 38 practices meet quarterly
- Locality meetings; Chester, Ellesmere Port/Neston/Willaston, Rural
- Monthly work plan and executive steering group meetings

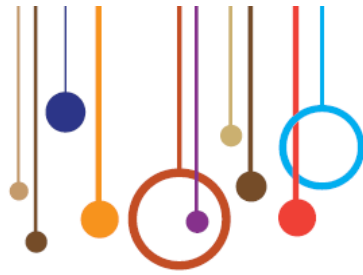




## NHS Western Cheshire: Interim Position

- One Consortium – whole population, all practices
- Run by an elected board
- Board = 8 GPs, 3 practice managers and director
- NHS Western Cheshire directors supporting
- Have the Collaborative: all 38 practices meet quarterly
- Locality meetings; Chester, Ellesmere Port/Neston/Willaston, Rural
- Create a Joint Sub-committee of the Consortium and NHS Western Cheshire to replace the Commissioning and Strategy Committee
- Sub-committee to reflect governance to meet today's requirements but also to allow the consortium to take responsibility via the sub-committee i.e. Director of Finance cover consortium delegated powers
- Formally Delegated Powers
- GPs in the lead and need to build relationships including Health and Wellbeing Board





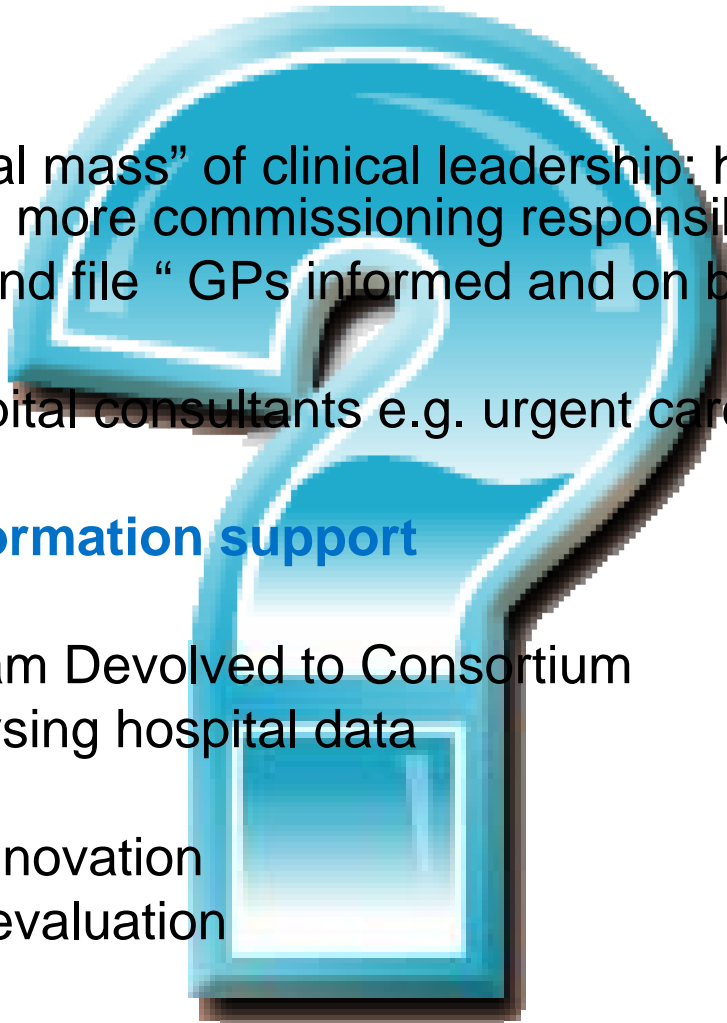
# Developing GP Commissioning in NHS Western Cheshire (1)

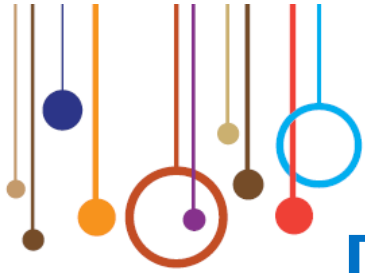
## Clinical engagement

- Developing a “critical mass” of clinical leadership: how many local GPs can and will take on more commissioning responsibility?
- Keeping the “rank and file “ GPs informed and on board
- Other professions?
- How to involve hospital consultants e.g. urgent care, long term conditions

## Management and information support

- Commissioning Team Devolved to Consortium
  - Support in analysing hospital data
  - Contracting
  - Redesign and innovation
  - Monitoring and evaluation





## Developing GP Commissioning (2)

### Finance

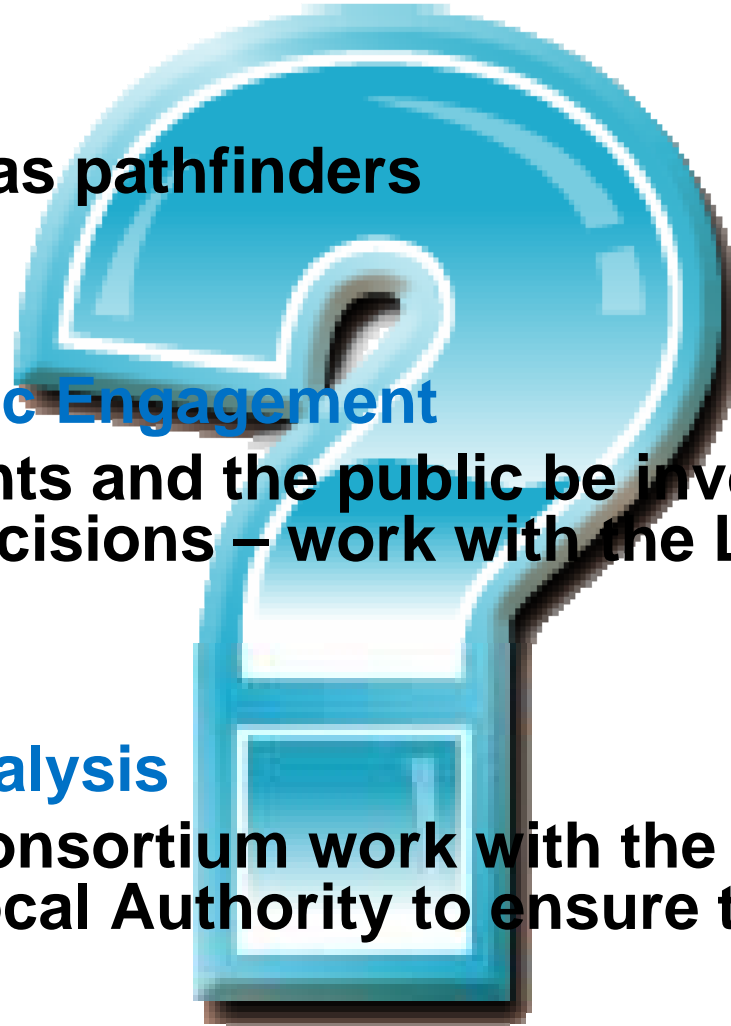
- **Hard budgets as pathfinders**

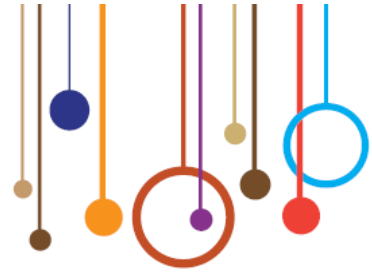
### Patient and Public Engagement

- **How will patients and the public be involved in consortium decisions – work with the Local Authority ?**

### Health Needs Analysis

- **How will the consortium work with the new Public Health service and Local Authority to ensure their plans meet Health needs**





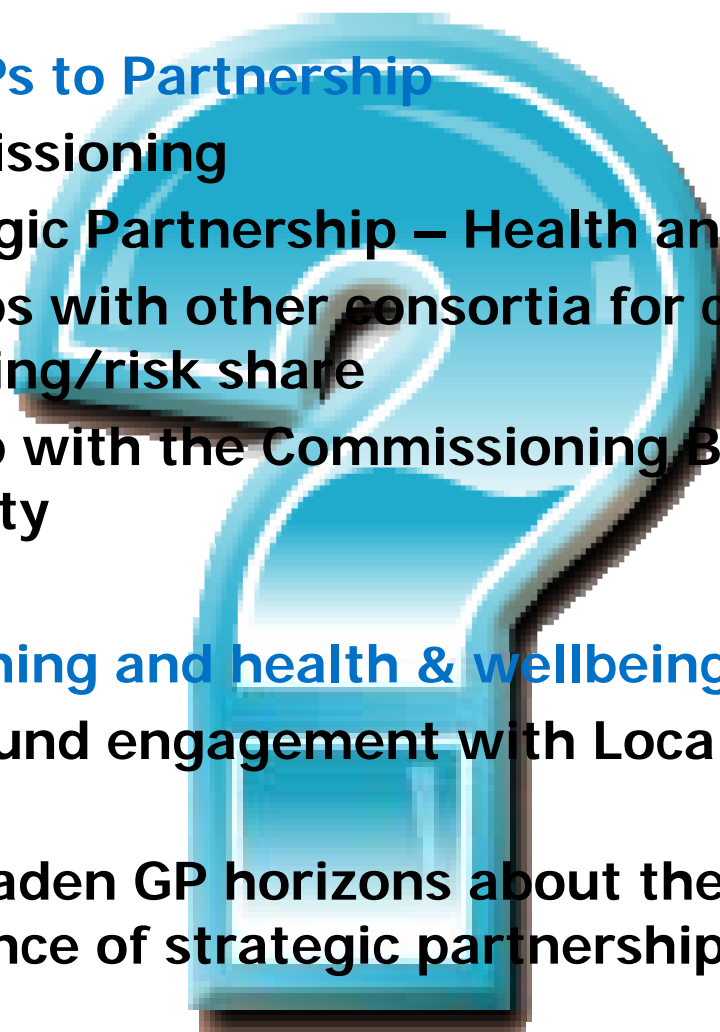
## Developing GP Commissioning (3)

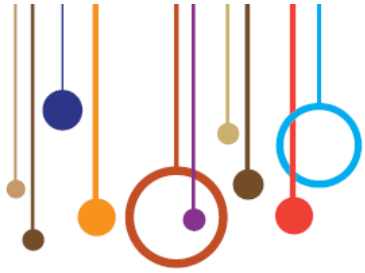
### Introducing GPs to Partnership

- **Joint Commissioning**
- **Local Strategic Partnership – Health and Well being**
- **Relationships with other consortia for collaborative commissioning/risk share**
- **Relationship with the Commissioning Board including accountability**

### GP Commissioning and health & wellbeing

- **Support around engagement with Local Authority and other partners**
- **Need to broaden GP horizons about the well being agenda and the importance of strategic partnerships**





## Transferring Public Health

- 
- **White paper end November**
  - **? Idea about resource**
  - **? Ideas about process**
  - **Would want to mirror new landscape quickly**
  - **Using delegated authority**
  - **Integrating the team into the Local Authority as soon as possible**
  - **Operating in Shadow form from April 2011?**

