

































































economy					
12. Skills and training	✓	✓	✓	✓	✓
13. Cultural development			✓		✓
14. Valuing young people	✓	✓		✓	✓
15. Adapting to climate change					✓

## 6 MAKING IT HAPPEN

This section outlines in broad terms the mechanisms by which the ambitions of the document will be taken forward. Key to this is our local strategic partnership, West Cheshire Together, which brings together partners from across the public, private, voluntary, community and faith sectors working at strategic, tactical and operational levels (structure illustrated at appendix 1). Together we can deliver outcomes which are beyond the scope of any one partner organisation to tackle. The partnership is organised into five thematic partnerships which provide forums for collectively reviewing and steering resources to achieve the aspirations set out in the Sustainable Community Strategy. Further detail on the performance management framework which guides this process is given below. Table 2 illustrates role of each thematic partnership in taking forward the commitments in the Sustainable Community Strategy.

**Table 2: Sustainable Community Strategy commitments linked to Thematic Partnership priorities**

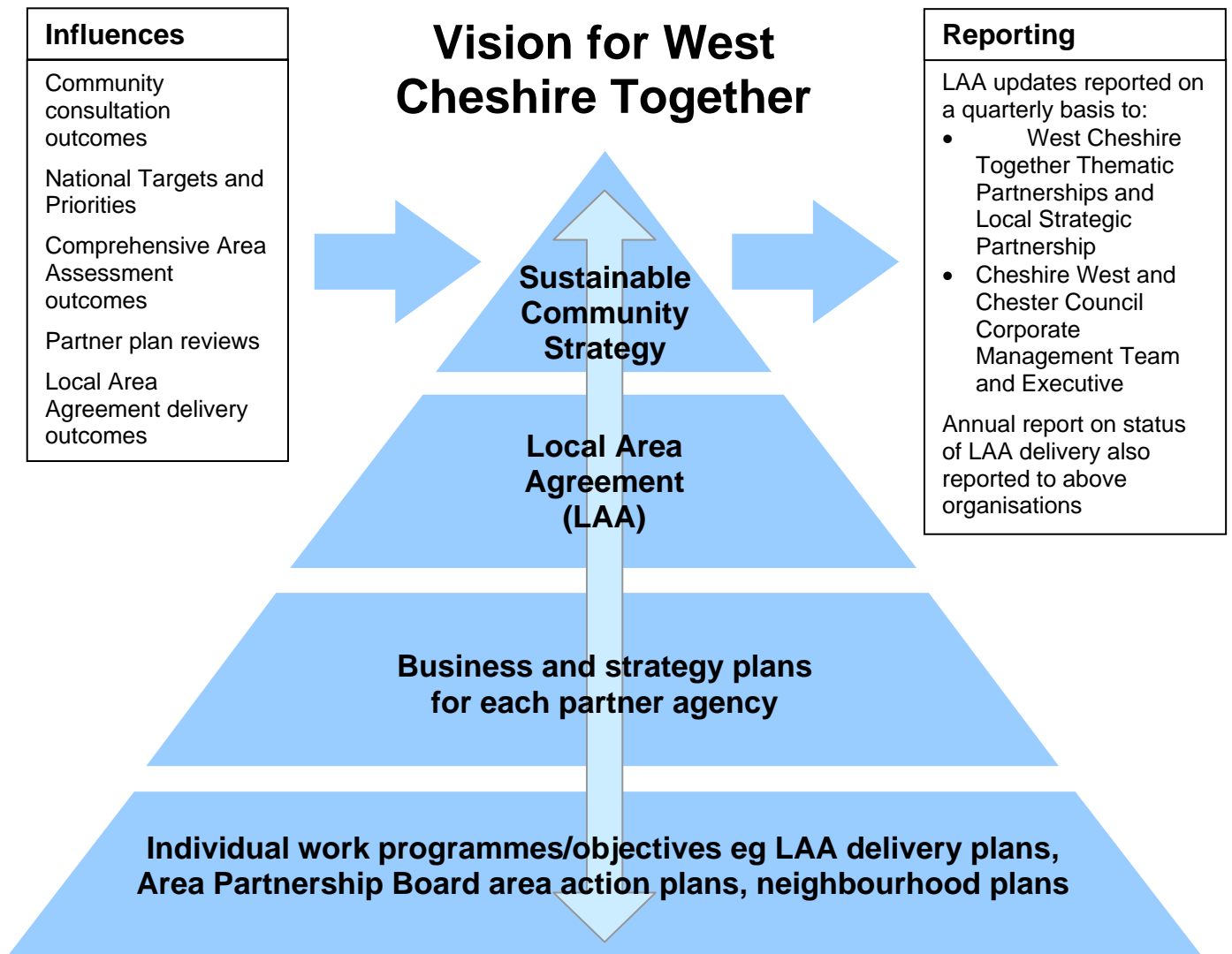
	Safer Stronger Communities	Health and Wellbeing	Children and Young People	Environment and Sustainability	Business Enterprise and Culture
1. Promoting diversity	✓	✓	✓	✓	✓
2. Supporting the third sector	✓			✓	
3. Feeling safe	✓		✓		
4. Addressing community safety	✓	✓	✓		
5. Community action on climate change and sustainability	✓	✓	✓	✓	✓
6. Community influence on decision making	✓		✓		

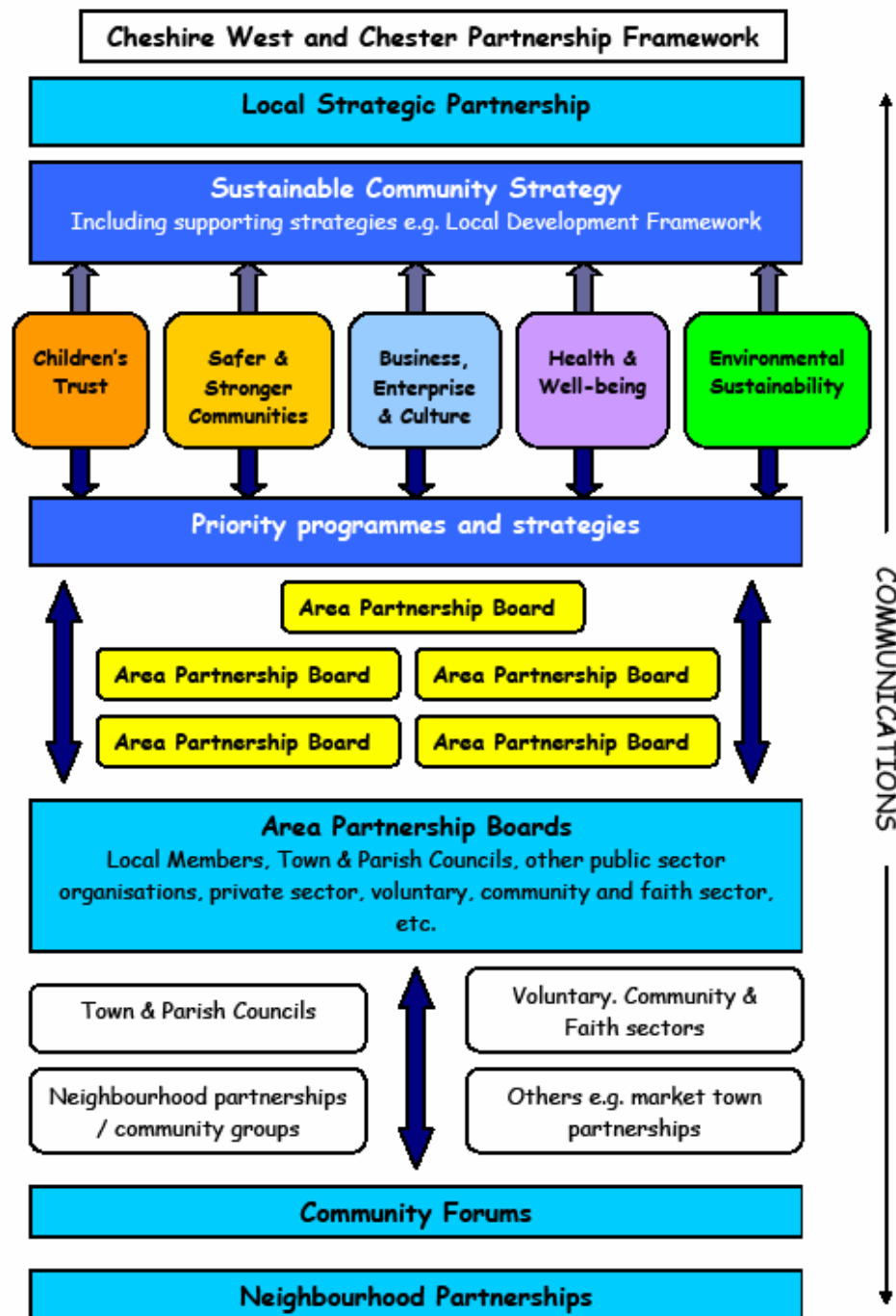
7. Health inequalities	✓	✓			
8. Reducing deprivation	✓	✓	✓	✓	✓
9. The ageing population	✓	✓			
10. Homes for all	✓	✓		✓	✓
11. Sustainable and thriving economy			✓	✓	✓
12. Skills and training			✓		✓
13. Cultural development			✓	✓	✓
14. Valuing young people	✓		✓	✓	✓
15. Adapting to climate change	✓	✓		✓	

Joined up and collaborative working is critical to the delivery of these commitments. We must work together to improve the coordination of activity between partners, sharing resources, information, strategy alignment and sharing best practice. A critical ingredient is effective communications, the focal point for which is our West Cheshire Together website [www.westcheshiretogether.org.uk](http://www.westcheshiretogether.org.uk).

## Sustainable Community Strategy Performance Management Framework

The performance management framework for the West Cheshire Together Partnership is outlined below. Its short term aim is to track the implementation status of the West Cheshire Together Local Area Agreement. The current agreement concludes at the end of March 2011. The longer term aim is to use the framework to assess the extent to which partnership activity is ensuring the attainment of the commitments contained in the Sustainable Community Strategy.





## ‘West Cheshire Together’ Membership

Membership of "West Cheshire Together" is drawn from a wide range of public, private and third sector organisations as well as other key partnerships established to tackle specific issues.

- Cheshire Constabulary
- Cheshire Fire Authority
- Cheshire Fire & Rescue Service
- Cheshire, Halton & Warrington Race and Equality Centre
- Cheshire Housing Alliance
- Cheshire Police Authority
- Cheshire Probation Service
- Cheshire West and Chester Council
- Connexions Cheshire & Warrington
- Government Office for the North West
- Jobcentre Plus
- NHS Western Cheshire
- North West Development Agency
- Learning & Skills Council Cheshire & Warrington
- Visit Chester and Cheshire
- West Cheshire and North Wales Chamber of Commerce

In addition, representatives are drawn from the following:-

- The Five Area Partnership Board Chairs (Chester; Ellesmere Port; Northwich & Rural North; Rural West; Winsford & East)
- The Five Thematic Partnership Board Chairs (Childrens Trust; Environmental Sustainability; Safer & Stronger Communities; Health & Wellbeing; Business, Enterprise & Culture)
- Cheshire Association of Local Councils (representing town and parish councils)
- Further Education representative
- Higher Education representative
- Third Sector Assembly representative
- Urban Communities representative

## GLOSSARY

### **Sustainable Community Strategy (SCS)**

A statutory strategy prepared by a local authority in conjunction with others through a Local Strategic Partnership. The purpose is to improve local quality of life and aspirations, setting the overall strategic direction and long-term vision for the economic, social and environmental well-being of a local area – typically 10-20 years – in a way that contributes to sustainable development in the UK. It tells the ‘story of the place’ – the distinctive vision and ambition of the area, backed by clear evidence and analysis

### **Local Strategic Partnership (LSP)**

An overarching non-statutory partnership that brings together the various parts of the public sector as well as the private, business, community, voluntary and faith sectors within a local authority area, collaboratively working and supporting each other for the benefit of the local area.

### **Local Area Agreement (LAA)**

A three year “deal” between Government, local authorities and their partners to improve services and the quality of life for local people. The LAA is also a shorter term “delivery mechanism” for the Sustainable Community Strategy and is intended to simplify arrangements for the management of some central funding, helping join up public services more effectively and allowing greater flexibility for local solutions to local circumstances.

### **West Cheshire Together**

The Partnerships Framework for the borough of Cheshire West and Chester. Operates as a cohesive network of multi-agency partnerships through which partners from across the public, private, community, voluntary and faith sectors can come together and work collaboratively to tackle local problems, improve local quality of life and deliver priority outcomes for local people.

### **Local Development Framework Core Strategy**

A series of documents which forms the basis for planning decisions in an area and sets out the Council’s vision and objectives for the borough. Designed to meet the challenges facing West Cheshire including choices on key decisions such as where development should go and what should be protected.

### **Audit Commission**

An independent watchdog driving economy, efficiency and effectiveness in local public services to deliver better outcomes for everyone.

### **Comprehensive Area Assessment**

The framework by which local areas are assessed on an annual basis by the Audit Commission. It considers the collective performance of all local services, not just the Local Authority. The key driver behind this framework is to improve local outcomes for local residents. By bringing together evidence across different local services, it hopes to be more effective in driving improvement than separate assessments of each sector can be.

### **Local Transport Plan**

Sets out the objectives, strategy and delivery programmes and targets to take forward local transport needs to provide and promote a safe, integrated and sustainable transport network for the future and improve and maintain all aspects of a local transport system.

### **Area Partnership Boards (APBs)**

Five geographic partnerships underpin the LSP, covering the areas of Chester; Ellesmere Port; Northwich and Rural North; Rural West; and Winsford and Rural East. Each will assess evidence of the needs and priorities from within each area to inform the development of Area Action Plans to help shape service delivery. APBs are tasked with performance managing relevant Local Area Agreement and National Indicator targets for their area, to ensure service delivery meets the needs of local residents.

### **Third Sector**

Consists of voluntary, community and faith groups/organisations, charities, social enterprises, co-operative, mutual and other not-for profit groups or organisations. Third sector organisations are non-governmental (NGOs) and have a social, environmental or cultural value focus. They principally re-invest any financial services to further these values and objectives.

### **Third Sector Assembly (Cheshire West)**

An association of independent Third Sector networks and organisations in the Cheshire West area. It offers a recognised focal point – not just for partners wishing to engage with the sector, but also for the sector itself. It provides a forum for discussion, information exchange, mutual support and co-ordination, dialogue and decision-making on the “big issues” affecting the sector nationally, regionally and locally.

### **The Compact (for Cheshire West and Chester)**

An agreement between the voluntary, community and faith sector and public sector partners to improve the ways in which they work together.

### **Community Forums (x 14)**

Designed to operate at the local level and based on current (as at 1st April 2009) ward boundaries, they give local communities (residents and organisations) an opportunity to contribute to local decision making to create better services and improvements for their areas.

### **Policing Pledge**

Commitment that the Policing Service in England and Wales will support law abiding citizens and pursue criminals relentlessly to keep neighbourhoods safe from harm.

### **Community Engagement and Empowerment Strategy (Cheshire West and Chester Council)**

A document which defines and promotes what the Council means by engagement and empowerment, states why it is committed to engaging and



